

**MCM2 Antibody**  
Rabbit mAb  
Catalog # AP92864

## Specification

---

### MCM2 Antibody - Product Information

Application	WB, IHC, FC, ICC, IP
Primary Accession	<a href="#">P49736</a>
Clonality	<b>Monoclonal</b>
<b>Other Names</b>	
BM28; CCNL1; cdc19; CDCL1; Cyclin like 1; MCM2;	

Isotype	<b>Rabbit IgG</b>
Host	<b>Rabbit</b>
Calculated MW	<b>101896 Da</b>

### MCM2 Antibody - Additional Information

Purification	<b>Affinity-chromatography</b>
Immunogen	<b>A synthesized peptide derived from human MCM2</b>
Description	<b>Acts as component of the MCM2-7 complex (MCM complex) which is the putative replicative helicase essential for 'once per cell cycle' DNA replication initiation and elongation in eukaryotic cells.</b>
Storage Condition and Buffer	<b>Rabbit IgG in phosphate buffered saline , pH 7.4, 150mM NaCl, 0.02% sodium azide and 50% glycerol. Store at +4°C short term. Store at -20°C long term. Avoid freeze / thaw cycle.</b>

### MCM2 Antibody - Protein Information

Name MCM2 ([HGNC:6944](#))

#### Function

Acts as a component of the MCM2-7 complex (MCM complex) which is the replicative helicase essential for 'once per cell cycle' DNA replication initiation and elongation in eukaryotic cells. Core component of CDC45-MCM-GINS (CMG) helicase, the molecular machine that unwinds template DNA during replication, and around which the replisome is built (PubMed:<a href="http://www.uniprot.org/citations/32453425" target="\_blank">32453425</a>, PubMed:<a href="http://www.uniprot.org/citations/34694004" target="\_blank">34694004</a>, PubMed:<a href="http://www.uniprot.org/citations/34700328" target="\_blank">34700328</a>, PubMed:<a href="http://www.uniprot.org/citations/35585232" target="\_blank">35585232</a>). The active ATPase sites in the MCM2-7 ring are formed through the interaction surfaces of two neighboring subunits such that a critical structure of a conserved arginine finger motif is provided in trans relative to the ATP-binding site of the Walker A box of the adjacent subunit. The six ATPase active sites, however, are likely to contribute differentially to the complex helicase activity (PubMed:<a

href="http://www.uniprot.org/citations/32453425" target="\_blank">32453425</a>). Required for the entry in S phase and for cell division (PubMed:<a href="http://www.uniprot.org/citations/8175912" target="\_blank">8175912</a>). Plays a role in terminally differentiated hair cells development of the cochlea and induces cells apoptosis (PubMed:<a href="http://www.uniprot.org/citations/26196677" target="\_blank">26196677</a>).

#### Cellular Location

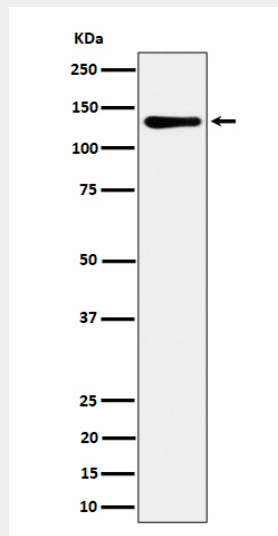
Nucleus. Chromosome. Note=Associated with chromatin before the formation of nuclei and detaches from it as DNA replication progresses. {ECO:0000250|UniProtKB:P55861}

#### MCM2 Antibody - Protocols

Provided below are standard protocols that you may find useful for product applications.

- [Western Blot](#)
- [Blocking Peptides](#)
- [Dot Blot](#)
- [Immunohistochemistry](#)
- [Immunofluorescence](#)
- [Immunoprecipitation](#)
- [Flow Cytometry](#)
- [Cell Culture](#)

#### MCM2 Antibody - Images



Western blot analysis of MCM2 expression in HeLa cell lysate.