

Cystatin B Antibody
Rabbit mAb
Catalog # AP92863**Specification**

Cystatin B Antibody - Product Information

Application	WB, IHC
Primary Accession	P04080
Reactivity	Rat
Clonality	Monoclonal
Other Names	
CHROW21; CST6; CSTB; Cystatin B (stefin B); CYTB EPM1; EPM1A; PME; STFB; ULD;	
Isotype	Rabbit IgG
Host	Rabbit
Calculated MW	11140 Da

Cystatin B Antibody - Additional Information

Purification	Affinity-chromatography
Immunogen	A synthesized peptide derived from human Cystatin B
Description	This is an intracellular thiol proteinase inhibitor. Tightly binding reversible inhibitor of cathepsins L, H and B.
Storage Condition and Buffer	Rabbit IgG in phosphate buffered saline , pH 7.4, 150mM NaCl, 0.02% sodium azide and 50% glycerol. Store at +4°C short term. Store at -20°C long term. Avoid freeze / thaw cycle.

Cystatin B Antibody - Protein Information**Name** CSTB**Synonyms** CST6, STFB**Function**

This is an intracellular thiol proteinase inhibitor. Tightly binding reversible inhibitor of cathepsins L, H and B.

Cellular Location

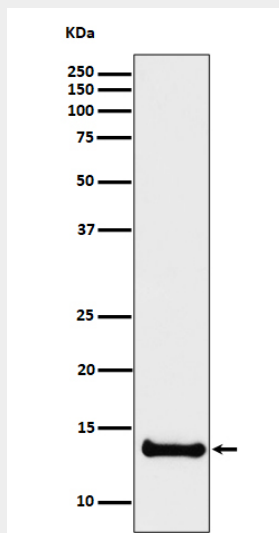
Cytoplasm. Nucleus

Cystatin B Antibody - Protocols

Provided below are standard protocols that you may find useful for product applications.

- [Western Blot](#)
- [Blocking Peptides](#)
- [Dot Blot](#)
- [Immunohistochemistry](#)
- [Immunofluorescence](#)
- [Immunoprecipitation](#)
- [Flow Cytometry](#)
- [Cell Culture](#)

Cystatin B Antibody - Images



Western blot analysis of Cystatin B expression in U87-MG cell lysate.