

RAB5C / RABL Antibody

Rabbit mAb

Catalog # AP92859

Specification

RAB5C / RABL Antibody - Product Information

Application	WB, IHC, ICC
Primary Accession	P51148
Reactivity	Rat
Clonality	Monoclonal

Other Names

L1880; RAB5C; RAB5C, member of RAS oncogene family; RAB5CL; RAB5L; RABL; Ras-related protein Rab-5C;

Isotype	Rabbit IgG
Host	Rabbit
Calculated MW	23483 Da

RAB5C / RABL Antibody - Additional Information

Purification	Affinity-chromatography
Immunogen	A synthesized peptide derived from human RAB5C / RABL
Description	Protein transport. Probably involved in vesicular traffic.
Storage Condition and Buffer	Rabbit IgG in phosphate buffered saline , pH 7.4, 150mM NaCl, 0.02% sodium azide and 50% glycerol. Store at +4°C short term. Store at -20°C long term. Avoid freeze / thaw cycle.

RAB5C / RABL Antibody - Protein Information**Name** RAB5C**Synonyms** RABL**Function**

Protein transport. Probably involved in vesicular traffic.

Cellular Location

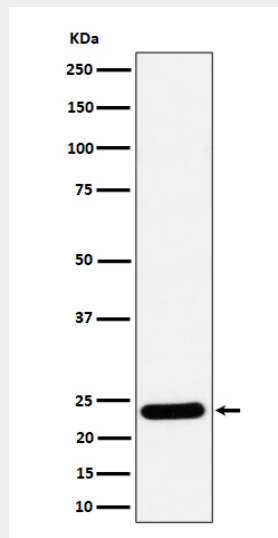
Cell membrane {ECO:0000250|UniProtKB:P20339}; Lipid-anchor {ECO:0000250|UniProtKB:P20339}; Cytoplasmic side {ECO:0000250|UniProtKB:P20339}. Early endosome membrane {ECO:0000250|UniProtKB:P20339}; Lipid-anchor {ECO:0000250|UniProtKB:P20339}. Melanosome. Note=Identified by mass spectrometry in melanosome fractions from stage I to stage IV

RAB5C / RABL Antibody - Protocols

Provided below are standard protocols that you may find useful for product applications.

- [Western Blot](#)
- [Blocking Peptides](#)
- [Dot Blot](#)
- [Immunohistochemistry](#)
- [Immunofluorescence](#)
- [Immunoprecipitation](#)
- [Flow Cytometry](#)
- [Cell Culture](#)

RAB5C / RABL Antibody - Images



Western blot analysis of RAB5C / RABL expression in 293 cell lysate.