

Adiponectin Antibody
Rabbit mAb
Catalog # AP92840**Specification**

Adiponectin Antibody - Product Information

Application	WB
Primary Accession	O15848
Reactivity	Rat
Clonality	Monoclonal

Other Names

30 kDa adipocyte complement related protein; ACDC; ACRP30; Adipocyte; Adiponectin; Adipoq; Adipose most abundant gene transcript 1; Adipose specific collagen like factor; ADIPQTL1; ADPN; APM1; GBP28; Gelatin binding protein; Gelatin binding protein 28;

Isotype	Rabbit IgG
Host	Rabbit
Calculated MW	26414 Da

Adiponectin Antibody - Additional Information

Purification	Affinity-chromatography
Immunogen	A synthesized peptide derived from human Adiponectin
Description	Important adipokine involved in the control of fat metabolism and insulin sensitivity, with direct anti-diabetic, anti-atherogenic and anti-inflammatory activities. Stimulates AMPK phosphorylation and activation in the liver and the skeletal muscle, enhancing glucose utilization and fatty-acid combustion.
Storage Condition and Buffer	Rabbit IgG in phosphate buffered saline , pH 7.4, 150mM NaCl, 0.02% sodium azide and 50% glycerol. Store at +4°C short term. Store at -20°C long term. Avoid freeze / thaw cycle.

Adiponectin Antibody - Protein Information**Name** ADIPOQ**Function**

Important adipokine involved in the control of fat metabolism and insulin sensitivity, with direct anti-diabetic, anti-atherogenic and anti-inflammatory activities. Stimulates AMPK phosphorylation and activation in the liver and the skeletal muscle, enhancing glucose utilization and fatty-acid combustion. Antagonizes TNF-alpha by negatively regulating its expression in various tissues such as liver and macrophages, and also by counteracting its effects. Inhibits endothelial NF-kappa-B signaling through a cAMP-dependent pathway. May play a role in cell growth, angiogenesis and

tissue remodeling by binding and sequestering various growth factors with distinct binding affinities, depending on the type of complex, LMW, MMW or HMW.

Cellular Location

Secreted.

Tissue Location

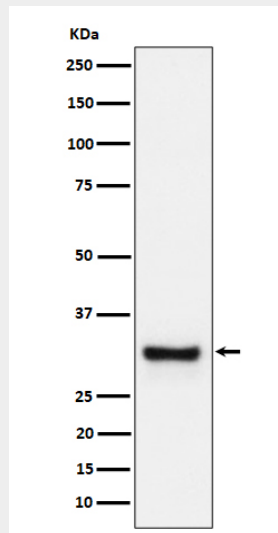
Synthesized exclusively by adipocytes and secreted into plasma.

Adiponectin Antibody - Protocols

Provided below are standard protocols that you may find useful for product applications.

- [Western Blot](#)
- [Blocking Peptides](#)
- [Dot Blot](#)
- [Immunohistochemistry](#)
- [Immunofluorescence](#)
- [Immunoprecipitation](#)
- [Flow Cytometry](#)
- [Cell Culture](#)

Adiponectin Antibody - Images



Western blot analysis of Adiponectin expression in human plasma cell lysate.