

HIF Prolyl Hydroxylases Antibody

Rabbit mAb

Catalog # AP92826

Specification

HIF Prolyl Hydroxylases Antibody - Product InformationApplication **WB, IHC, FC, IP**Primary Accession [O9NXG6](#)

Clonality

Monoclonal**Other Names**

EGLN4 ; HIFPH4; Hypoxia inducible factor prolyl 4 hydroxylase; P4H with transmembrane domain; P4htm; PH4; PHD4; Proline 4 hydroxylase; Prolyl hydroxylase domain containing 4;

Isotype

Rabbit IgG

Host

Rabbit

Calculated MW

56661 Da**HIF Prolyl Hydroxylases Antibody - Additional Information**

Purification

Affinity-chromatography

Immunogen

A synthesized peptide derived from human HIF Prolyl Hydroxylases

Description

Catalyzes the post-translational formation of 4-hydroxyproline in hypoxia-inducible factor (HIF) alpha proteins. Hydroxylates HIF1A at 'Pro-402' and 'Pro-564'. May function as a cellular oxygen sensor and, under normoxic conditions, may target HIF through the hydroxylation for proteasomal degradation via the von Hippel-Lindau ubiquitination complex.

Storage Condition and Buffer

Rabbit IgG in phosphate buffered saline , pH 7.4, 150mM NaCl, 0.02% sodium azide and 50% glycerol. Store at +4°C short term. Store at -20°C long term. Avoid freeze / thaw cycle.**HIF Prolyl Hydroxylases Antibody - Protein Information****Name** P4HTM**Synonyms** PH4**Function**

Catalyzes the post-translational formation of 4- hydroxyproline in hypoxia-inducible factor (HIF) alpha proteins. Hydroxylates HIF1A at 'Pro-402' and 'Pro-564'. May function as a cellular oxygen sensor and, under normoxic conditions, may target HIF through the hydroxylation for proteasomal degradation via the von Hippel-Lindau ubiquitination complex.

Cellular Location

Endoplasmic reticulum membrane; Single-pass type II membrane protein

Tissue Location

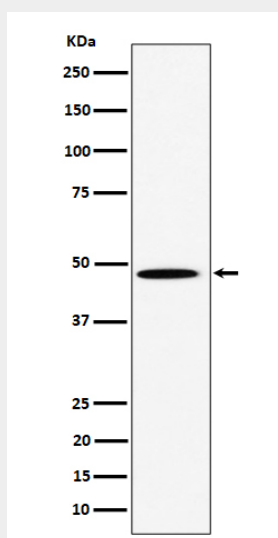
Widely expressed with highest levels in adult pancreas, heart, skeletal muscle, brain, placenta, kidney and adrenal gland. Expressed at lower levels in epiphyseal cartilage and in fibroblasts.

HIF Prolyl Hydroxylases Antibody - Protocols

Provided below are standard protocols that you may find useful for product applications.

- [Western Blot](#)
- [Blocking Peptides](#)
- [Dot Blot](#)
- [Immunohistochemistry](#)
- [Immunofluorescence](#)
- [Immunoprecipitation](#)
- [Flow Cytometry](#)
- [Cell Culture](#)

HIF Prolyl Hydroxylases Antibody - Images



Western blot analysis of HIF Prolyl Hydroxylases expression in HeLa cell lysate.