

SNRPD3 Antibody (C-term)
Affinity Purified Rabbit Polyclonal Antibody (Pab)
Catalog # AP9280b

Specification

SNRPD3 Antibody (C-term) - Product Information

Application	WB, IHC-P, FC,E
Primary Accession	P62318
Other Accession	P62323 , P62320
Reactivity	Human
Predicted	Mouse, Xenopus
Host	Rabbit
Clonality	Polyclonal
Isotype	Rabbit IgG
Antigen Region	99-126

SNRPD3 Antibody (C-term) - Additional Information

Gene ID 6634

Other Names

Small nuclear ribonucleoprotein Sm D3, Sm-D3, snRNP core protein D3, SNRPD3

Target/Specificity

This SNRPD3 antibody is generated from rabbits immunized with a KLH conjugated synthetic peptide between 99-126 amino acids from the C-terminal region of human SNRPD3.

Dilution

WB~~1:1000

IHC-P~~1:100

FC~~1:10~50

Format

Purified polyclonal antibody supplied in PBS with 0.09% (W/V) sodium azide. This antibody is purified through a protein A column, followed by peptide affinity purification.

Storage

Maintain refrigerated at 2-8°C for up to 2 weeks. For long term storage store at -20°C in small aliquots to prevent freeze-thaw cycles.

Precautions

SNRPD3 Antibody (C-term) is for research use only and not for use in diagnostic or therapeutic procedures.

SNRPD3 Antibody (C-term) - Protein Information

Name SNRPD3

Function Plays a role in pre-mRNA splicing as a core component of the spliceosomal U1, U2, U4 and U5 small nuclear ribonucleoproteins (snRNPs), the building blocks of the spliceosome (PubMed:[11991638](#), PubMed:[18984161](#), PubMed:[19325628](#), PubMed:[25555158](#), PubMed:[26912367](#), PubMed:[28076346](#), PubMed:[28502770](#), PubMed:[28781166](#), PubMed:[32494006](#)). Component of both the pre-catalytic spliceosome B complex and activated spliceosome C complexes (PubMed:[11991638](#), PubMed:[28076346](#), PubMed:[28502770](#), PubMed:[28781166](#)). As a component of the minor spliceosome, involved in the splicing of U12-type introns in pre-mRNAs (PubMed:[15146077](#), PubMed:[33509932](#)). As part of the U7 snRNP it is involved in histone pre-mRNA 3'-end processing (By similarity).

Cellular Location

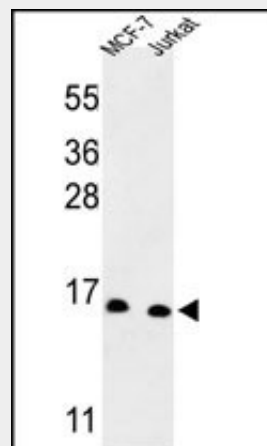
Cytoplasm, cytosol. Nucleus. Note=SMN- mediated assembly into core snRNPs occurs in the cytosol before SMN- mediated transport to the nucleus to be included in spliceosomes

SNRPD3 Antibody (C-term) - Protocols

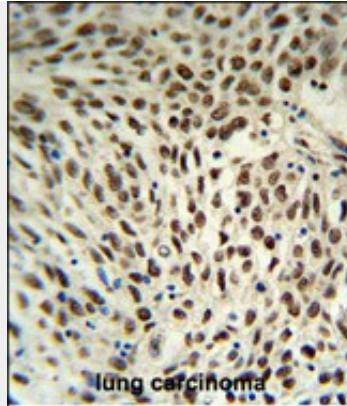
Provided below are standard protocols that you may find useful for product applications.

- [Western Blot](#)
- [Blocking Peptides](#)
- [Dot Blot](#)
- [Immunohistochemistry](#)
- [Immunofluorescence](#)
- [Immunoprecipitation](#)
- [Flow Cytometry](#)
- [Cell Culture](#)

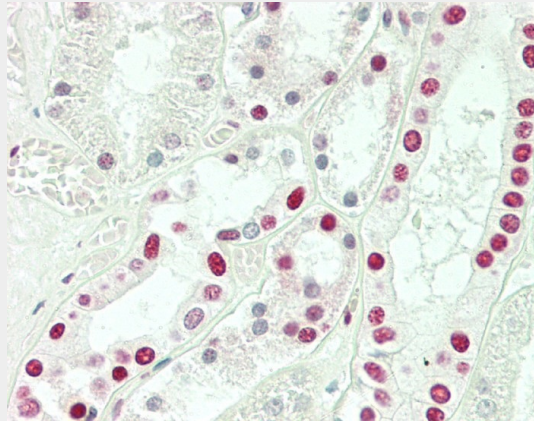
SNRPD3 Antibody (C-term) - Images



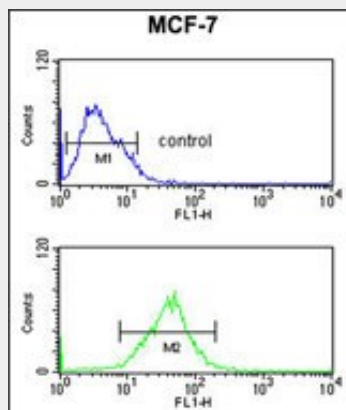
Western blot analysis of SNRPD3 Antibody (C-term) (Cat. #AP9280b) in MCF-7, Jurkat cell line lysates (35ug/lane). SNRPD3 (arrow) was detected using the purified Pab.



SNRPD3 Antibody (C-term) (Cat. #AP9280b) IHC analysis in formalin fixed and paraffin embedded human lung carcinoma followed by peroxidase conjugation of the secondary antibody and DAB staining. This data demonstrates the use of the SNRPD3 Antibody (C-term) for immunohistochemistry. Clinical relevance has not been evaluated.



Formalin-fixed and paraffin-embedded H.kidney tissue reacted with SNRPD3 Antibody (C-term) (Cat#AP9280b).



SNRPD3 Antibody (C-term) (Cat. #AP9280b) flow cytometric analysis of MCF-7 cells (bottom histogram) compared to a negative control cell (top histogram).FITC-conjugated goat-anti-rabbit secondary antibodies were used for the analysis.

SNRPD3 Antibody (C-term) - Background

The protein belongs to the small nuclear ribonucleoprotein core protein family. It is required for pre-mRNA splicing and small nuclear ribonucleoprotein biogenesis.

SNRPD3 Antibody (C-term) - References

Gonsalvez,G.B., et.al., J. Cell Biol. 178 (5), 733-740 (2007)

Ma,Y., et.al., Structure 13 (6), 883-892 (2005)

Mahler,M., et.al., Arthritis Res. Ther. 7 (1), R19-R29 (2005)

SNRPD3 Antibody (C-term) - Citations

- [Evolutionarily conserved protein ERH controls CENP-E mRNA splicing and is required for the survival of KRAS mutant cancer cells.](#)