

Calcipressin 1 Antibody
Rabbit mAb
Catalog # AP92806**Specification****Calcipressin 1 Antibody - Product Information**

Application	WB
Primary Accession	P53805
Reactivity	Rat
Clonality	Monoclonal
Other Names	
Adapt78; Calcipressin 1; CSP1; DSC1; DSCR1; MCIP1; RCAN1; RCN1;	
Isotype	Rabbit IgG
Host	Rabbit
Calculated MW	28079 Da

Calcipressin 1 Antibody - Additional Information

Purification	Affinity-chromatography
Immunogen	A synthesized peptide derived from human Calcipressin 1
Description	Inhibits calcineurin-dependent transcriptional responses by binding to the catalytic domain of calcineurin A. Could play a role during central nervous system development.
Storage Condition and Buffer	Rabbit IgG in phosphate buffered saline , pH 7.4, 150mM NaCl, 0.02% sodium azide and 50% glycerol. Store at +4°C short term. Store at -20°C long term. Avoid freeze / thaw cycle.

Calcipressin 1 Antibody - Protein Information**Name** RCAN1**Synonyms** ADAPT78, CSP1, DSC1, DSCR1**Function**

Inhibits calcineurin-dependent transcriptional responses by binding to the catalytic domain of calcineurin A (PubMed: <http://www.uniprot.org/citations/12809556> target="_blank">12809556). Could play a role during central nervous system development (By similarity).

Tissue Location

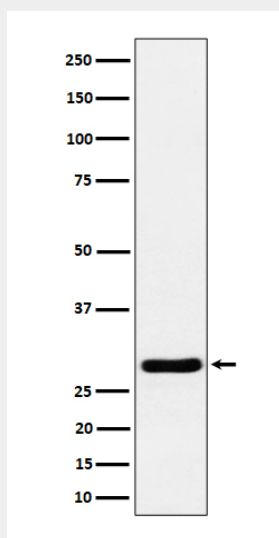
Highly expressed heart, brain and skeletal muscle. Also expressed in all other tissues

Calcipressin 1 Antibody - Protocols

Provided below are standard protocols that you may find useful for product applications.

- [Western Blot](#)
- [Blocking Peptides](#)
- [Dot Blot](#)
- [Immunohistochemistry](#)
- [Immunofluorescence](#)
- [Immunoprecipitation](#)
- [Flow Cytometry](#)
- [Cell Culture](#)

Calcipressin 1 Antibody - Images



Western blot analysis of Calcipressin 1 expression in mouse heart cell lysate.