

**TOE1 Antibody**  
Rabbit mAb  
Catalog # AP92803

## Specification

---

### TOE1 Antibody - Product Information

Application	WB
Primary Accession	<a href="#">O96GM8</a>
Clonality	Monoclonal
<b>Other Names</b>	
Toe1;	
Isotype	Rabbit IgG
Host	Rabbit
Calculated MW	56548 Da

### TOE1 Antibody - Additional Information

Purification	<b>Affinity-chromatography</b>
Immunogen	<b>A synthesized peptide derived from human TOE1</b>
Description	<b>Inhibits cell growth rate and cell cycle. Induces CDKN1A expression as well as TGF-beta expression. Mediates the inhibitory growth effect of EGR1.</b>
Storage Condition and Buffer	<b>Rabbit IgG in phosphate buffered saline , pH 7.4, 150mM NaCl, 0.02% sodium azide and 50% glycerol. Store at +4°C short term. Store at -20°C long term. Avoid freeze / thaw cycle.</b>

### TOE1 Antibody - Protein Information

**Name** TOE1

#### **Function**

Inhibits cell growth rate and cell cycle. Induces CDKN1A expression as well as TGF-beta expression. Mediates the inhibitory growth effect of EGR1. Involved in the maturation of snRNAs and snRNA 3'-tail processing (PubMed:<http://www.uniprot.org/citations/28092684> target="\_blank">28092684</a>).

#### **Cellular Location**

Nucleus, nucleolus. Nucleus speckle. Note=Localizes to nuclear speckles

#### **Tissue Location**

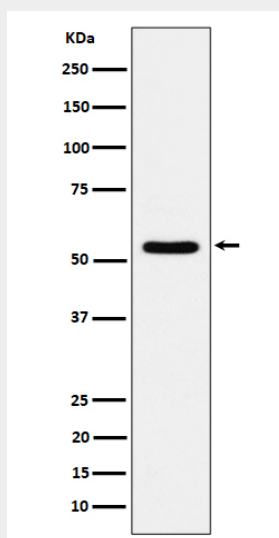
Widely expressed..

## TOE1 Antibody - Protocols

Provided below are standard protocols that you may find useful for product applications.

- [Western Blot](#)
- [Blocking Peptides](#)
- [Dot Blot](#)
- [Immunohistochemistry](#)
- [Immunofluorescence](#)
- [Immunoprecipitation](#)
- [Flow Cytometry](#)
- [Cell Culture](#)

## TOE1 Antibody - Images



Western blot analysis of TOE1 expression in 293T cell lysate.