

Kallikrein 8 Antibody
Rabbit mAb
Catalog # AP92798

Specification

Kallikrein 8 Antibody - Product Information

| | |
|---|------------------------|
| Application | WB, IHC |
| Primary Accession | O60259 |
| Clonality | Monoclonal |
| Other Names | |
| BSP1; hK8; HNP; HPN; Kallikrein8; Kik8; NRPN; PRSS19; TADG14; UNQ283; | |
| Isotype | Rabbit IgG |
| Host | Rabbit |
| Calculated MW | 28048 Da |

Kallikrein 8 Antibody - Additional Information

| | |
|------------------------------|--|
| Purification | Affinity-chromatography |
| Immunogen | A synthesized peptide derived from human Kallikrein 8 |
| Description | Serine protease which is capable of degrading a number of proteins such as casein, fibrinogen, kininogen, fibronectin and collagen type IV. Also cleaves L1CAM in response to increased neural activity. |
| Storage Condition and Buffer | Rabbit IgG in phosphate buffered saline , pH 7.4, 150mM NaCl, 0.02% sodium azide and 50% glycerol. Store at +4°C short term. Store at -20°C long term. Avoid freeze / thaw cycle. |

Kallikrein 8 Antibody - Protein Information

Name KLK8

Synonyms NRPN, PRSS19, TADG14

Function

Serine protease which is capable of degrading a number of proteins such as casein, fibrinogen, kininogen, fibronectin and collagen type IV. Also cleaves L1CAM in response to increased neural activity. Induces neurite outgrowth and fasciculation of cultured hippocampal neurons. Plays a role in the formation and maturation of orphan and small synaptic boutons in the Schaffer-collateral pathway, regulates Schaffer-collateral long-term potentiation in the hippocampus and is required for memory acquisition and synaptic plasticity. Involved in skin desquamation and keratinocyte proliferation. Plays a role in the secondary phase of pathogenesis following spinal cord injury.

Cellular Location

Secreted. Cytoplasm. Note=Shows a cytoplasmic distribution in the keratinocytes

Tissue Location

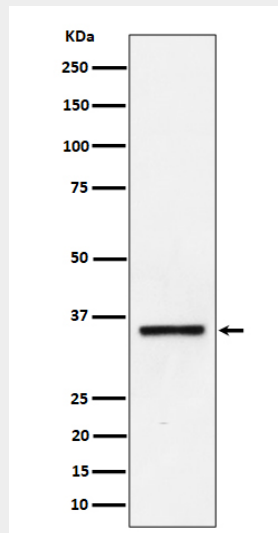
Isoform 1 is predominantly expressed in the pancreas. Isoform 2 is expressed in adult brain and hippocampus. Isoform 1 and isoform 2 are found in fetal brain and placenta. Detected in salivary gland, uterus, thymus, breast, testis and kidney but not in spleen, liver, lung or normal ovarian tissue. Displays an 11.5-fold increase in Alzheimer disease hippocampus compared to controls and is overexpressed in some ovarian carcinomas. Expressed at low levels in normal skin while high levels are found in psoriasis vulgaris, seborrheic keratosis, lichen planus and squamous cell carcinoma skin samples. Expressed in the keratinocytes.

Kallikrein 8 Antibody - Protocols

Provided below are standard protocols that you may find useful for product applications.

- [Western Blot](#)
- [Blocking Peptides](#)
- [Dot Blot](#)
- [Immunohistochemistry](#)
- [Immunofluorescence](#)
- [Immunoprecipitation](#)
- [Flow Cytometry](#)
- [Cell Culture](#)

Kallikrein 8 Antibody - Images



Western blot analysis of Kallikrein 8 expression in Jurkat cell lysate.