

**Somatostatin Receptor 1 Antibody**  
Rabbit mAb  
Catalog # AP92790

**Specification**

---

**Somatostatin Receptor 1 Antibody - Product Information**

Application	WB, ICC
Primary Accession	<a href="#">P30872</a>
Clonality	Monoclonal
<b>Other Names</b>	
Somatostatin R1; SRIF2; SS1R; Sstr1;	
Isotype	Rabbit IgG
Host	Rabbit
Calculated MW	42686 Da

**Somatostatin Receptor 1 Antibody - Additional Information**

Purification	Affinity-chromatography
Immunogen	A synthesized peptide derived from human Somatostatin Receptor 1
Description	Receptor for somatostatin with higher affinity for somatostatin-14 than -28. This receptor is coupled via pertussis toxin sensitive G proteins to inhibition of adenylyl cyclase.
Storage Condition and Buffer	Rabbit IgG in phosphate buffered saline , pH 7.4, 150mM NaCl, 0.02% sodium azide and 50% glycerol. Store at +4°C short term. Store at -20°C long term. Avoid freeze / thaw cycle.

**Somatostatin Receptor 1 Antibody - Protein Information**

**Name** SSTR1

**Function**

Receptor for somatostatin with higher affinity for somatostatin-14 than -28. This receptor is coupled via pertussis toxin sensitive G proteins to inhibition of adenylyl cyclase. In addition it stimulates phosphotyrosine phosphatase and Na(+)/H(+) exchanger via pertussis toxin insensitive G proteins.

**Cellular Location**

Cell membrane; Multi-pass membrane protein.

**Tissue Location**

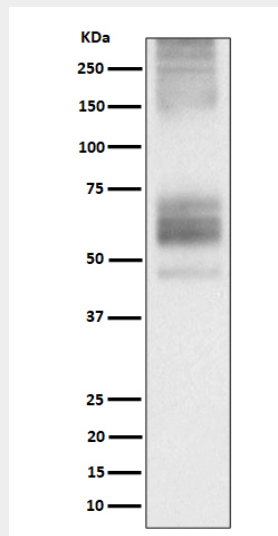
Fetal kidney, fetal liver, and adult pancreas, brain, lung, jejunum and stomach

## Somatostatin Receptor 1 Antibody - Protocols

Provided below are standard protocols that you may find useful for product applications.

- [Western Blot](#)
- [Blocking Peptides](#)
- [Dot Blot](#)
- [Immunohistochemistry](#)
- [Immunofluorescence](#)
- [Immunoprecipitation](#)
- [Flow Cytometry](#)
- [Cell Culture](#)

## Somatostatin Receptor 1 Antibody - Images



Western blot analysis of Somatostatin Receptor 1 expression in 293T transfected with Somatostatin Receptor 1 cell lysate.