

SOD2 (acetyl K68) Antibody
Rabbit mAb
Catalog # AP92789**Specification**

SOD2 (acetyl K68) Antibody - Product Information

| | |
|--|------------------------|
| Application | WB, IHC |
| Primary Accession | P04179 |
| Reactivity | Rat |
| Clonality | Monoclonal |
| Other Names | |
| Indophenoloxidase B; IPOB; MNSOD; MVCD6; SOD2; | |
| Isotype | Rabbit IgG |
| Host | Rabbit |
| Calculated MW | 24750 Da |

SOD2 (acetyl K68) Antibody - Additional Information

| | |
|------------------------------|---|
| Purification | Affinity-chromatography |
| Immunogen | A synthesized peptide derived from human SOD2 (acetyl K68) |
| Description | Destroys superoxide anion radicals which are normally produced within the cells and which are toxic to biological systems. |
| Storage Condition and Buffer | Rabbit IgG in phosphate buffered saline , pH 7.4, 150mM NaCl, 0.02% sodium azide and 50% glycerol. Store at +4°C short term. Store at -20°C long term. Avoid freeze / thaw cycle. |

SOD2 (acetyl K68) Antibody - Protein Information

Name SOD2

Function

Destroys superoxide anion radicals which are normally produced within the cells and which are toxic to biological systems.

Cellular Location

Mitochondrion matrix.

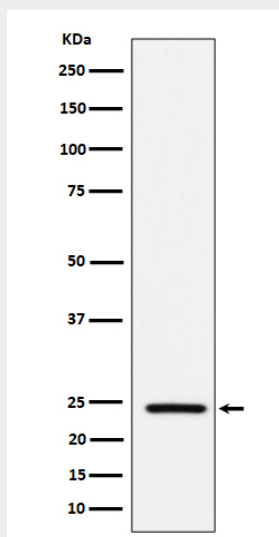
SOD2 (acetyl K68) Antibody - Protocols

Provided below are standard protocols that you may find useful for product applications.

- [Western Blot](#)

- [Blocking Peptides](#)
- [Dot Blot](#)
- [Immunohistochemistry](#)
- [Immunofluorescence](#)
- [Immunoprecipitation](#)
- [Flow Cytometry](#)
- [Cell Culture](#)

SOD2 (acetyl K68) Antibody - Images



Western blot analysis of SOD2 (acetyl K68) expression in mouse heart cell lysate.