

**C1s Antibody**  
**Rabbit mAb**  
**Catalog # AP92780****Specification**

---

**C1s Antibody - Product Information**

Application	WB, IHC, IP
Primary Accession	<a href="#">P09871</a>
Clonality	Monoclonal
<b>Other Names</b>	
C1 esterase; C1S;	
Isotype	Rabbit IgG
Host	Rabbit
Calculated MW	76684 Da

**C1s Antibody - Additional Information**

Purification	Affinity-chromatography
Immunogen	A synthesized peptide derived from human C1s
Description	C1s B chain is a serine protease that combines with C1q and C1r to form C1, the first component of the classical pathway of the complement system. C1r activates C1s so that it can, in turn, activate C2 and C4. Rabbit IgG in phosphate buffered saline , pH 7.4, 150mM NaCl, 0.02% sodium azide and 50% glycerol. Store at +4°C short term. Store at -20°C long term. Avoid freeze / thaw cycle.
Storage Condition and Buffer	

**C1s Antibody - Protein Information****Name** C1S**Function**

C1s B chain is a serine protease that combines with C1q and C1r to form C1, the first component of the classical pathway of the complement system. C1r activates C1s so that it can, in turn, activate C2 and C4. Cleaves also IGFBP5 and thereby inhibits the trophic effects of IGF1.

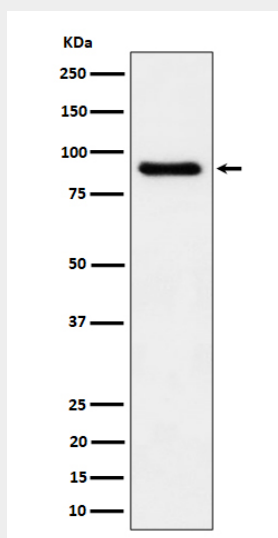
**C1s Antibody - Protocols**

Provided below are standard protocols that you may find useful for product applications.

- [Western Blot](#)
- [Blocking Peptides](#)

- [Dot Blot](#)
- [Immunohistochemistry](#)
- [Immunofluorescence](#)
- [Immunoprecipitation](#)
- [Flow Cytometry](#)
- [Cell Culture](#)

### C1s Antibody - Images



Western blot analysis of C1s expression in human plasma cell lysate.