

Spermine synthase Antibody
Rabbit mAb
Catalog # AP92776**Specification**

Spermine synthase Antibody - Product Information

Application	WB, ICC
Primary Accession	P52788
Reactivity	Rat
Clonality	Monoclonal
Other Names	
MRSR; SMS; Spermine synthase; SPMSY; SpS; SRS;	
Isotype	Rabbit IgG
Host	Rabbit
Calculated MW	41268 Da

Spermine synthase Antibody - Additional Information

Purification	Affinity-chromatography
Immunogen	A synthesized peptide derived from human Spermine synthase
Description	Required for normal viability, growth and fertility.
Storage Condition and Buffer	Rabbit IgG in phosphate buffered saline , pH 7.4, 150mM NaCl, 0.02% sodium azide and 50% glycerol. Store at +4°C short term. Store at -20°C long term. Avoid freeze / thaw cycle.

Spermine synthase Antibody - Protein Information

Name SMS {ECO:0000303|PubMed:14508504, ECO:0000312|HGNC:HGNC:11123}

Function

Catalyzes the production of spermine from spermidine and decarboxylated S-adenosylmethionine (dcSAM).

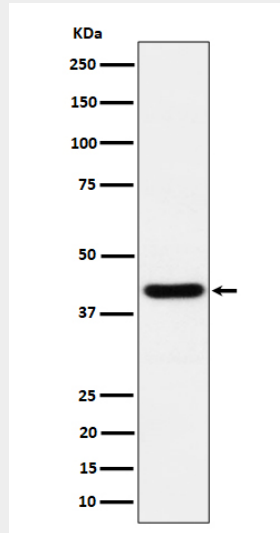
Spermine synthase Antibody - Protocols

Provided below are standard protocols that you may find useful for product applications.

- [Western Blot](#)
- [Blocking Peptides](#)
- [Dot Blot](#)
- [Immunohistochemistry](#)
- [Immunofluorescence](#)

- [Immunoprecipitation](#)
- [Flow Cytometry](#)
- [Cell Culture](#)

Spermine synthase Antibody - Images



Western blot analysis of Spermine synthase expression in HeLa cell lysate.