

IL11RA Antibody
Rabbit mAb
Catalog # AP92769

Specification

IL11RA Antibody - Product Information

Application	WB, IHC, FC, ICC
Primary Accession	Q14626
Clonality	Monoclonal
Other Names	
CRSDA; IL-11 receptor subunit alpha; IL-11R subunit alpha; IL11RA; Interleukin 11 receptor alpha; Interleukin 11 receptor alpha chain;	
Isotype	Rabbit IgG
Host	Rabbit
Calculated MW	45222 Da

IL11RA Antibody - Additional Information

Purification	Affinity-chromatography
Immunogen	A synthesized peptide derived from human IL11RA
Description	Receptor for interleukin-11. The receptor systems for IL6, LIF, OSM, CNTF, IL11 and CT1 can utilize IL6ST for initiating signal transmission. The IL11/IL11RA/IL6ST complex may be involved in the control of proliferation and/or differentiation of skeletogenic progenitor or other mesenchymal cells.
Storage Condition and Buffer	Rabbit IgG in phosphate buffered saline , pH 7.4, 150mM NaCl, 0.02% sodium azide and 50% glycerol. Store at +4°C short term. Store at -20°C long term. Avoid freeze / thaw cycle.

IL11RA Antibody - Protein Information

Name IL11RA ([HGNC:5967](#))

Function

Receptor for interleukin-11 (IL11). The receptor systems for IL6, LIF, OSM, CNTF, IL11 and CT1 can utilize IL6ST for initiating signal transmission. The IL11/IL11RA/IL6ST complex may be involved in the control of proliferation and/or differentiation of skeletogenic progenitor or other mesenchymal cells (Probable). Essential for the normal development of craniofacial bones and teeth. Restricts suture fusion and tooth number.

Cellular Location

[Interleukin-11 receptor subunit alpha]: Membrane; Single-pass type I membrane protein [Isoform

HCR2]: Secreted

Tissue Location

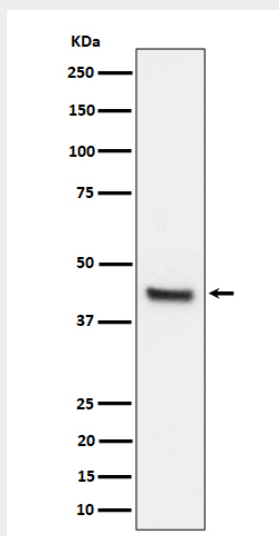
Expressed in a number of cell lines, including the myelogenous leukemia cell line K-562, the megakaryocytic leukemia cell line M-07e, the erythroleukemia cell line TF-1, and the osteosarcoma cell lines, MG-63 and SaOS-2 (PubMed:7670098). Also expressed in normal and malignant prostate epithelial cell lines. Expression levels are increased in prostate carcinoma.

IL11RA Antibody - Protocols

Provided below are standard protocols that you may find useful for product applications.

- [Western Blot](#)
- [Blocking Peptides](#)
- [Dot Blot](#)
- [Immunohistochemistry](#)
- [Immunofluorescence](#)
- [Immunoprecipitation](#)
- [Flow Cytometry](#)
- [Cell Culture](#)

IL11RA Antibody - Images



Western blot analysis of IL11RA expression in 293T cell lysate.