

SAMM50 Antibody
Rabbit mAb
Catalog # AP92764

Specification

SAMM50 Antibody - Product Information

Application	WB, IHC
Primary Accession	O9Y512
Clonality	Monoclonal
Other Names	
CGI 51; OMP85; SAM50; Samm50; TOB55;	
Isotype	Rabbit IgG
Host	Rabbit
Calculated MW	51976 Da

SAMM50 Antibody - Additional Information

Purification	Affinity-chromatography
Immunogen	A synthesized peptide derived from human SAMM50
Description	May be required for the assembly pathway of mitochondrial outer membrane proteins.
Storage Condition and Buffer	Rabbit IgG in phosphate buffered saline , pH 7.4, 150mM NaCl, 0.02% sodium azide and 50% glycerol. Store at +4°C short term. Store at -20°C long term. Avoid freeze / thaw cycle.

SAMM50 Antibody - Protein Information

Name SAMM50

Synonyms SAM50

Function

Plays a crucial role in the maintenance of the structure of mitochondrial cristae and the proper assembly of the mitochondrial respiratory chain complexes (PubMed:22252321, PubMed:25781180). Required for the assembly of TOMM40 into the TOM complex (PubMed:15644312).

Cellular Location

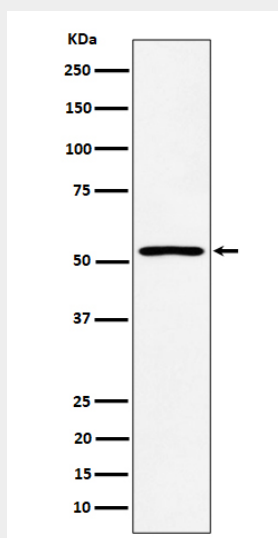
Mitochondrion outer membrane; Multi-pass membrane protein. Cytoplasm {ECO:0000250|UniProtKB:Q6AXV4}. Mitochondrion

SAMM50 Antibody - Protocols

Provided below are standard protocols that you may find useful for product applications.

- [Western Blot](#)
- [Blocking Peptides](#)
- [Dot Blot](#)
- [Immunohistochemistry](#)
- [Immunofluorescence](#)
- [Immunoprecipitation](#)
- [Flow Cytometry](#)
- [Cell Culture](#)

SAMM50 Antibody - Images



Western blot analysis of SAMM50 expression in HepG2 cell lysate.