

TTF1 Antibody
Rabbit mAb
Catalog # AP92762

Specification

TTF1 Antibody - Product Information

Application	WB, IHC
Primary Accession	P43699
Reactivity	Rat
Clonality	Monoclonal
Other Names	
BCH; BHC; NK2; NKX2.1; NKX2A; TEBP; Thyroid nuclear factor 1; Tinman; TITF1; TTF1;	
Isotype	Rabbit IgG
Host	Rabbit
Calculated MW	38596 Da

TTF1 Antibody - Additional Information

Purification	Affinity-chromatography
Immunogen	A synthesized peptide derived from human TTF1
Description	Transcription factor that binds and activates the promoter of thyroid specific genes such as thyroglobulin, thyroperoxidase, and thyrotropin receptor.
Storage Condition and Buffer	Rabbit IgG in phosphate buffered saline , pH 7.4, 150mM NaCl, 0.02% sodium azide and 50% glycerol. Store at +4°C short term. Store at -20°C long term. Avoid freeze / thaw cycle.

TTF1 Antibody - Protein Information

Name NKX2-1 ([HGNC:11825](#))

Synonyms NKX2A, TITF1, TTF1

Function

Transcription factor that binds and activates the promoter of thyroid specific genes such as thyroglobulin, thyroperoxidase, and thyrotropin receptor. Crucial in the maintenance of the thyroid differentiation phenotype. May play a role in lung development and surfactant homeostasis. Forms a regulatory loop with GRHL2 that coordinates lung epithelial cell morphogenesis and differentiation. Activates the transcription of GNRHR and plays a role in enhancing the circadian oscillation of its gene expression. Represses the transcription of the circadian transcriptional repressor NR1D1 (By similarity).

Cellular Location

Nucleus {ECO:0000250|UniProtKB:P50220}.

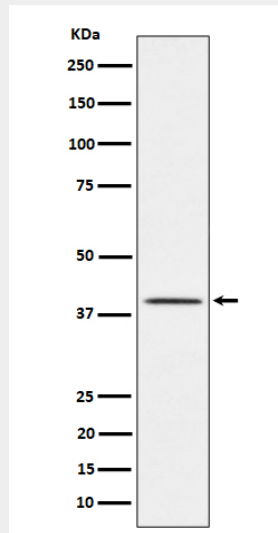
Tissue Location
Thyroid and lung.

TTF1 Antibody - Protocols

Provided below are standard protocols that you may find useful for product applications.

- [Western Blot](#)
- [Blocking Peptides](#)
- [Dot Blot](#)
- [Immunohistochemistry](#)
- [Immunofluorescence](#)
- [Immunoprecipitation](#)
- [Flow Cytometry](#)
- [Cell Culture](#)

TTF1 Antibody - Images



Western blot analysis of TTF1 expression in Rat lung cell lysate.