

**DPP3 Antibody**  
Rabbit mAb  
Catalog # AP92761

## Specification

---

### DPP3 Antibody - Product Information

Application	<b>WB, FC</b>
Primary Accession	<a href="#">O9NY33</a>
Clonality	<b>Monoclonal</b>
<b>Other Names</b>	
Dipeptidyl arylamidase III; Dipeptidyl peptidase 3; Dipeptidyl peptidase III; dpp3; DPPIII;	
Isotype	<b>Rabbit IgG</b>
Host	<b>Rabbit</b>
Calculated MW	<b>82589 Da</b>

### DPP3 Antibody - Additional Information

Purification	<b>Affinity-chromatography</b>
Immunogen	<b>A synthesized peptide derived from human DPP3</b>
Description	<b>Cleaves Arg-Arg-beta-naphthylamide.</b>
Storage Condition and Buffer	<b>Rabbit IgG in phosphate buffered saline , pH 7.4, 150mM NaCl, 0.02% sodium azide and 50% glycerol. Store at +4°C short term. Store at -20°C long term. Avoid freeze / thaw cycle.</b>

### DPP3 Antibody - Protein Information

**Name** DPP3

#### Function

Cleaves and degrades bioactive peptides, including angiotensin, Leu-enkephalin and Met-enkephalin (PubMed:[1515063](http://www.uniprot.org/citations/1515063), PubMed:[3233187](http://www.uniprot.org/citations/3233187)). Also cleaves Arg-Arg-beta-naphthylamide (in vitro) (PubMed:[11209758](http://www.uniprot.org/citations/11209758), PubMed:[3233187](http://www.uniprot.org/citations/3233187), PubMed:[9425109](http://www.uniprot.org/citations/9425109)).

#### Cellular Location

Cytoplasm, cytosol

#### Tissue Location

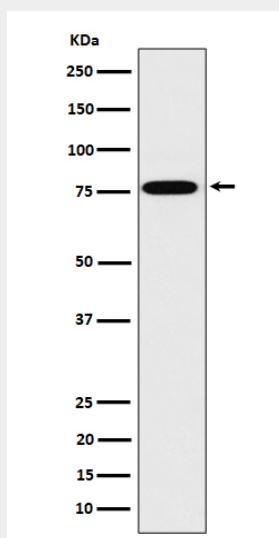
Detected in placenta (at protein level) (PubMed:3233187). Detected in erythrocytes (at protein level) (PubMed:1515063).

## DPP3 Antibody - Protocols

Provided below are standard protocols that you may find useful for product applications.

- [Western Blot](#)
- [Blocking Peptides](#)
- [Dot Blot](#)
- [Immunohistochemistry](#)
- [Immunofluorescence](#)
- [Immunoprecipitation](#)
- [Flow Cytometry](#)
- [Cell Culture](#)

## DPP3 Antibody - Images



Western blot analysis of DPP3 expression in 293T cell lysate.