

MUTA Antibody
Rabbit mAb
Catalog # AP92759

Specification

MUTA Antibody - Product Information

Application	WB, IHC, ICC
Primary Accession	P22033
Reactivity	Rat
Clonality	Monoclonal
Other Names	
MCM; Methylmalonyl CoA isomerase; Mut;	
Isotype	Rabbit IgG
Host	Rabbit
Calculated MW	83134 Da

MUTA Antibody - Additional Information

Purification	Affinity-chromatography
Immunogen	A synthesized peptide derived from human MUTA
Description	Involved in the degradation of several amino acids, odd-chain fatty acids and cholesterol via propionyl-CoA to the tricarboxylic acid cycle. MCM has different functions in other species.
Storage Condition and Buffer	Rabbit IgG in phosphate buffered saline , pH 7.4, 150mM NaCl, 0.02% sodium azide and 50% glycerol. Store at +4°C short term. Store at -20°C long term. Avoid freeze / thaw cycle.

MUTA Antibody - Protein Information

Name MMUT ([HGNC:7526](#))

Function

Catalyzes the reversible isomerization of methylmalonyl-CoA (MMCoA) (generated from branched-chain amino acid metabolism and degradation of dietary odd chain fatty acids and cholesterol) to succinyl-CoA (3-carboxypropionyl-CoA), a key intermediate of the tricarboxylic acid cycle.

Cellular Location

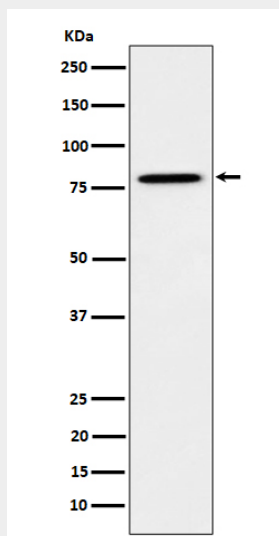
Mitochondrion matrix. Mitochondrion. Cytoplasm

MUTA Antibody - Protocols

Provided below are standard protocols that you may find useful for product applications.

- [Western Blot](#)
- [Blocking Peptides](#)
- [Dot Blot](#)
- [Immunohistochemistry](#)
- [Immunofluorescence](#)
- [Immunoprecipitation](#)
- [Flow Cytometry](#)
- [Cell Culture](#)

MUTA Antibody - Images



Western blot analysis of MUTA expression in HeLa cell lysate.