

**HOOK2 Antibody**  
Rabbit mAb  
Catalog # AP92758

## Specification

---

### HOOK2 Antibody - Product Information

Application	WB, IHC
Primary Accession	<a href="#">O96ED9</a>
Clonality	<b>Monoclonal</b>
<b>Other Names</b>	
hHK2; hhook2; HK2; HOOK 2;	
Isotype	<b>Rabbit IgG</b>
Host	<b>Rabbit</b>
Calculated MW	<b>83207 Da</b>

### HOOK2 Antibody - Additional Information

Purification	<b>Affinity-chromatography</b>
Immunogen	<b>A synthesized peptide derived from human HOOK2</b>
Description	<b>HOOK2 is a member of the Hook protein family. Hook proteins are cytosolic coiled-coil proteins that contain conserved N-terminal domains, which attach to microtubules, and more divergent C-terminal domains, which mediate binding to organelles.</b>
Storage Condition and Buffer	<b>Rabbit IgG in phosphate buffered saline , pH 7.4, 150mM NaCl, 0.02% sodium azide and 50% glycerol. Store at +4°C short term. Store at -20°C long term. Avoid freeze / thaw cycle.</b>

### HOOK2 Antibody - Protein Information

**Name** HOOK2

#### **Function**

Component of the FTS/Hook/FHIP complex (FHF complex). The FHF complex may function to promote vesicle trafficking and/or fusion via the homotypic vesicular protein sorting complex (the HOPS complex). Contributes to the establishment and maintenance of centrosome function. May function in the positioning or formation of aggresomes, which are pericentriolar accumulations of misfolded proteins, proteasomes and chaperones. FHF complex promotes the distribution of AP-4 complex to the perinuclear area of the cell (PubMed:<a href="http://www.uniprot.org/citations/32073997" target="\_blank">32073997</a>).

#### **Cellular Location**

Cytoplasm, cytoskeleton, microtubule organizing center, centrosome. Cytoplasm. Cytoplasm,

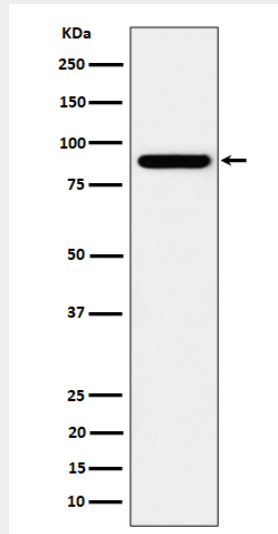
cytoskeleton {ECO:0000250|UniProtKB:Q7TMK6}. Golgi apparatus, trans-Golgi network. Note=Colocalizes with aggresomes, which are aggregates of misfolded proteins, at the centrosome (PubMed:17540036). Also localizes to punctate cytoplasmic foci which do not appear to overlap with early or late endosomes, the endoplasmic reticulum, multivesicular bodies (MVBs), lysosome, or mitochondria (PubMed:17540036, PubMed:32073997). Often found in close association with microtubules (PubMed:17540036). Localizes to the manchette in elongating spermatids (By similarity). {ECO:0000250|UniProtKB:Q7TMK6, ECO:0000269|PubMed:17540036, ECO:0000269|PubMed:32073997}

## HOOK2 Antibody - Protocols

Provided below are standard protocols that you may find useful for product applications.

- [Western Blot](#)
- [Blocking Peptides](#)
- [Dot Blot](#)
- [Immunohistochemistry](#)
- [Immunofluorescence](#)
- [Immunoprecipitation](#)
- [Flow Cytometry](#)
- [Cell Culture](#)

## HOOK2 Antibody - Images



Western blot analysis of HOOK2 expression in HeLa cell lysate.