

**PPP6C Antibody**  
Rabbit mAb  
Catalog # AP92757

## Specification

---

### PPP6C Antibody - Product Information

Application **WB, FC, ICC**  
Primary Accession [O00743](#)  
Clonality **Monoclonal**  
**Other Names**  
PP6; PP6C; PPP6; Ppp6c;

Isotype **Rabbit IgG**  
Host **Rabbit**  
Calculated MW **35144 Da**

### PPP6C Antibody - Additional Information

Purification **Affinity-chromatography**  
Immunogen **A synthesized peptide derived from human PPP6C**  
Description **Catalytic subunit of protein phosphatase 6 (PP6). PP6 is a component of a signaling pathway regulating cell cycle progression in response to IL2 receptor stimulation.**  
Storage Condition and Buffer **Rabbit IgG in phosphate buffered saline , pH 7.4, 150mM NaCl, 0.02% sodium azide and 50% glycerol. Store at +4°C short term. Store at -20°C long term. Avoid freeze / thaw cycle.**

### PPP6C Antibody - Protein Information

**Name** PPP6C {ECO:0000303|PubMed:29053956, ECO:0000312|HGNC:HGNC:9323}

#### Function

Catalytic subunit of protein phosphatase 6 (PP6) (PubMed: [17079228](http://www.uniprot.org/citations/17079228), PubMed: [29053956](http://www.uniprot.org/citations/29053956), PubMed: [32474700](http://www.uniprot.org/citations/32474700)). PP6 is a component of a signaling pathway regulating cell cycle progression in response to IL2 receptor stimulation (PubMed: [10227379](http://www.uniprot.org/citations/10227379)). N-terminal domain restricts G1 to S phase progression in cancer cells, in part through control of cyclin D1 (PubMed: [17568194](http://www.uniprot.org/citations/17568194)). During mitosis, regulates spindle positioning (PubMed: [27335426](http://www.uniprot.org/citations/27335426)). Down-regulates MAP3K7 kinase activation of the IL1 signaling pathway by dephosphorylation of MAP3K7 (PubMed: [17079228](http://www.uniprot.org/citations/17079228))

target="\_blank">17079228</a>). Participates also in the innate immune defense against viruses by dephosphorylating RIGI, an essential step that triggers RIGI-mediated signaling activation (PubMed:<a href="http://www.uniprot.org/citations/29053956" target="\_blank">29053956</a>). Also regulates innate immunity by acting as a negative regulator of the cGAS-STING pathway: mediates dephosphorylation and inactivation of CGAS and STING1 (PubMed:<a href="http://www.uniprot.org/citations/32474700" target="\_blank">32474700</a>, PubMed:<a href="http://www.uniprot.org/citations/32753499" target="\_blank">32753499</a>). CGAS dephosphorylation at 'Ser-435' impairs its ability to bind GTP, thereby inactivating it (PubMed:<a href="http://www.uniprot.org/citations/32474700" target="\_blank">32474700</a>).

#### Cellular Location

Mitochondrion. Cytoplasm

#### Tissue Location

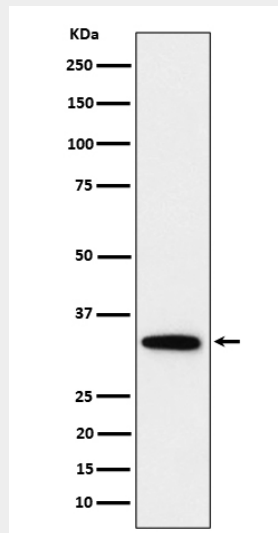
Ubiquitously expressed in all tissues tested with highest expression levels in testis, heart, kidney, brain, stomach, liver and skeletal muscle and lowest in placenta, lung colon and spleen.

### PPP6C Antibody - Protocols

Provided below are standard protocols that you may find useful for product applications.

- [Western Blot](#)
- [Blocking Peptides](#)
- [Dot Blot](#)
- [Immunohistochemistry](#)
- [Immunofluorescence](#)
- [Immunoprecipitation](#)
- [Flow Cytometry](#)
- [Cell Culture](#)

### PPP6C Antibody - Images



Western blot analysis of PPP6C expression in HeLa cell lysate.