

RASA1 Antibody
Rabbit mAb
Catalog # AP92746

Specification

RASA1 Antibody - Product Information

Application	WB, IHC
Primary Accession	P20936
Reactivity	Rat
Clonality	Monoclonal
Other Names	
CMAVM; GAP; p120GAP; p120RASGAP; PKWS; RASA; RASA1; RasGAP;	
Isotype	Rabbit IgG
Host	Rabbit
Calculated MW	116403 Da

RASA1 Antibody - Additional Information

Purification	Affinity-chromatography
Immunogen	A synthesized peptide derived from human RASA1
Description	Inhibitory regulator of the Ras-cyclic AMP pathway. Stimulates the GTPase of normal but not oncogenic Ras p21.
Storage Condition and Buffer	Rabbit IgG in phosphate buffered saline , pH 7.4, 150mM NaCl, 0.02% sodium azide and 50% glycerol. Store at +4°C short term. Store at -20°C long term. Avoid freeze / thaw cycle.

RASA1 Antibody - Protein Information

Name RASA1

Synonyms GAP, RASA

Function

Inhibitory regulator of the Ras-cyclic AMP pathway. Stimulates the GTPase of normal but not oncogenic Ras p21; this stimulation may be further increased in the presence of NCK1.

Cellular Location

Cytoplasm.

Tissue Location

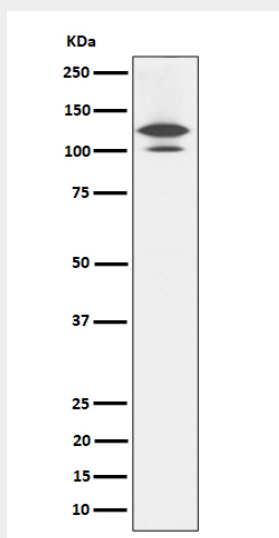
In placental villi, detected only in the trophoblast layer (cytotrophoblast and syncytiotrophoblast). Not detected in stromal, endothelial or Hofbauer cells (at protein level)

RASA1 Antibody - Protocols

Provided below are standard protocols that you may find useful for product applications.

- [Western Blot](#)
- [Blocking Peptides](#)
- [Dot Blot](#)
- [Immunohistochemistry](#)
- [Immunofluorescence](#)
- [Immunoprecipitation](#)
- [Flow Cytometry](#)
- [Cell Culture](#)

RASA1 Antibody - Images



Western blot analysis of RASA1 expression in Rat brain cell lysate.