

**Prostein Antibody**  
Rabbit mAb  
Catalog # AP92732

## Specification

---

### Prostein Antibody - Product Information

Application	WB, IHC
Primary Accession	<a href="#">O96JT2</a>
Clonality	Monoclonal
<b>Other Names</b>	
IPCA6; PCANAP2; PCANAP6; PCANAP8; Prostein; PRST; Slc45a3;	

Isotype	Rabbit IgG
Host	Rabbit
Calculated MW	59323 Da

### Prostein Antibody - Additional Information

Purification	Affinity-chromatography
Immunogen	A synthesized peptide derived from human Prostein
Description	Marker for prostate cells. May be used, in case of prostate cancers, as a target antigen for prostate carcinomas-directed cytotoxic T-cell lymphocytes.
Storage Condition and Buffer	Rabbit IgG in phosphate buffered saline , pH 7.4, 150mM NaCl, 0.02% sodium azide and 50% glycerol. Store at +4°C short term. Store at -20°C long term. Avoid freeze / thaw cycle.

### Prostein Antibody - Protein Information

**Name** SLC45A3 ([HGNC:8642](#))

**Synonyms** PCANAP6, PRST

#### Function

Proton-associated sucrose transporter. May be able to transport also glucose and fructose.

#### Cellular Location

Membrane; Multi-pass membrane protein

#### Tissue Location

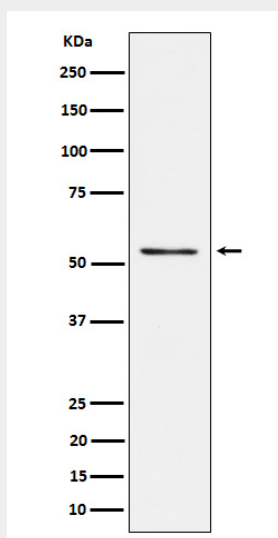
Prostate specific. Expressed in all prostatic glandular cells. Expressed both in normal and cancerous prostates

## Protein Antibody - Protocols

Provided below are standard protocols that you may find useful for product applications.

- [Western Blot](#)
- [Blocking Peptides](#)
- [Dot Blot](#)
- [Immunohistochemistry](#)
- [Immunofluorescence](#)
- [Immunoprecipitation](#)
- [Flow Cytometry](#)
- [Cell Culture](#)

## Protein Antibody - Images



Western blot analysis of Prostein expression in LnCaP cell lysate.