

**ARPC2 Antibody**  
**Rabbit mAb**  
**Catalog # AP92728****Specification**

---

**ARPC2 Antibody - Product Information**

Application	WB, IHC, FC, ICC, IP
Primary Accession	<a href="#">O15144</a>
Reactivity	Rat
Clonality	Monoclonal
<b>Other Names</b>	
ARC34; Arpc2; p34Arc; PNAS139; PRO2446;	
Isotype	Rabbit IgG
Host	Rabbit
Calculated MW	34333 Da

**ARPC2 Antibody - Additional Information**

Purification	Affinity-chromatography
Immunogen	A synthesized peptide derived from human ARPC2
Description	Functions as actin-binding component of the Arp2/3 complex which is involved in regulation of actin polymerization and together with an activating nucleation-promoting factor (NPF) mediates the formation of branched actin networks. Seems to contact the mother actin filament.
Storage Condition and Buffer	Rabbit IgG in phosphate buffered saline , pH 7.4, 150mM NaCl, 0.02% sodium azide and 50% glycerol. Store at +4°C short term. Store at -20°C long term. Avoid freeze / thaw cycle.

**ARPC2 Antibody - Protein Information****Name** ARPC2**Synonyms** ARC34**Function**

Actin-binding component of the Arp2/3 complex, a multiprotein complex that mediates actin polymerization upon stimulation by nucleation-promoting factor (NPF) (PubMed:<a href="http://www.uniprot.org/citations/9230079" target="\_blank">9230079</a>). The Arp2/3 complex mediates the formation of branched actin networks in the cytoplasm, providing the force for cell motility (PubMed:<a href="http://www.uniprot.org/citations/9230079" target="\_blank">9230079</a>). Seems to contact the mother actin filament (PubMed:<a href="http://www.uniprot.org/citations/9230079" target="\_blank">9230079</a>).

<http://www.uniprot.org/citations/9230079>). In addition to its role in the cytoplasmic cytoskeleton, the Arp2/3 complex also promotes actin polymerization in the nucleus, thereby regulating gene transcription and repair of damaged DNA (PubMed: <http://www.uniprot.org/citations/29925947>). The Arp2/3 complex promotes homologous recombination (HR) repair in response to DNA damage by promoting nuclear actin polymerization, leading to drive motility of double-strand breaks (DSBs) (PubMed: <http://www.uniprot.org/citations/29925947>).

#### Cellular Location

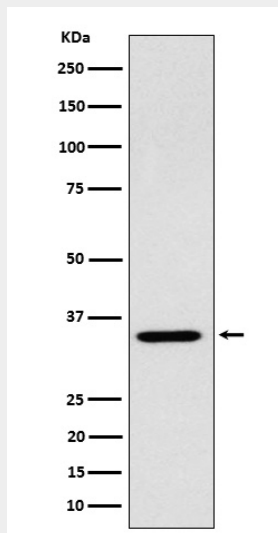
Cytoplasm, cytoskeleton. Cell projection. Synapse, synaptosome {ECO:0000250|UniProtKB:Q9CVB6}. Nucleus

#### ARPC2 Antibody - Protocols

Provided below are standard protocols that you may find useful for product applications.

- [Western Blot](#)
- [Blocking Peptides](#)
- [Dot Blot](#)
- [Immunohistochemistry](#)
- [Immunofluorescence](#)
- [Immunoprecipitation](#)
- [Flow Cytometry](#)
- [Cell Culture](#)

#### ARPC2 Antibody - Images



Western blot analysis of ARPC2 expression in 293 cell lysate.