

HFE Antibody
Rabbit mAb
Catalog # AP92724

Specification

HFE Antibody - Product Information

Application	WB
Primary Accession	Q30201
Clonality	Monoclonal
Other Names	
Hemochromatosis; HFE; HFE1; HLAH; MVCD7; TFQTL2;	
Isotype	Rabbit IgG
Host	Rabbit
Calculated MW	40108 Da

HFE Antibody - Additional Information

Purification	Affinity-chromatography
Immunogen	A synthesized peptide derived from human HFE
Description	Binds to transferrin receptor (TFR) and reduces its affinity for iron-loaded transferrin.
Storage Condition and Buffer	Rabbit IgG in phosphate buffered saline , pH 7.4, 150mM NaCl, 0.02% sodium azide and 50% glycerol. Store at +4°C short term. Store at -20°C long term. Avoid freeze / thaw cycle.

HFE Antibody - Protein Information

Name HFE

Synonyms HLAH

Function

Binds to transferrin receptor (TFR) and reduces its affinity for iron-loaded transferrin.

Cellular Location

Cell membrane; Single-pass type I membrane protein

Tissue Location

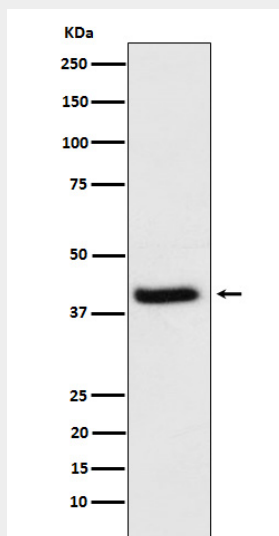
Expressed in all tissues tested except brain.

HFE Antibody - Protocols

Provided below are standard protocols that you may find useful for product applications.

- [Western Blot](#)
- [Blocking Peptides](#)
- [Dot Blot](#)
- [Immunohistochemistry](#)
- [Immunofluorescence](#)
- [Immunoprecipitation](#)
- [Flow Cytometry](#)
- [Cell Culture](#)

HFE Antibody - Images



Western blot analysis of HFE expression in HeLa cell lysate.