

MGST1 Antibody
Rabbit mAb
Catalog # AP92720

Specification

MGST1 Antibody - Product Information

Application	WB, IHC, FC, ICC
Primary Accession	P10620
Reactivity	Rat
Clonality	Monoclonal
Other Names	
MGST1; GST12; MGST; MGST I; MGST1;	
Isotype	Rabbit IgG
Host	Rabbit
Calculated MW	17599 Da

MGST1 Antibody - Additional Information

Purification	Affinity-chromatography
Immunogen	A synthesized peptide derived from human MGST1
Description	Conjugation of reduced glutathione to a wide number of exogenous and endogenous hydrophobic electrophiles. Has a wide substrate specificity.
Storage Condition and Buffer	Rabbit IgG in phosphate buffered saline , pH 7.4, 150mM NaCl, 0.02% sodium azide and 50% glycerol. Store at +4°C short term. Store at -20°C long term. Avoid freeze / thaw cycle.

MGST1 Antibody - Protein Information

Name MGST1

Synonyms GST12, MGST

Function

Conjugation of reduced glutathione to a wide number of exogenous and endogenous hydrophobic electrophiles.

Cellular Location

Endoplasmic reticulum membrane {ECO:0000250|UniProtKB:P08011}; Multi-pass membrane protein. Mitochondrion outer membrane {ECO:0000250|UniProtKB:P08011}

Tissue Location

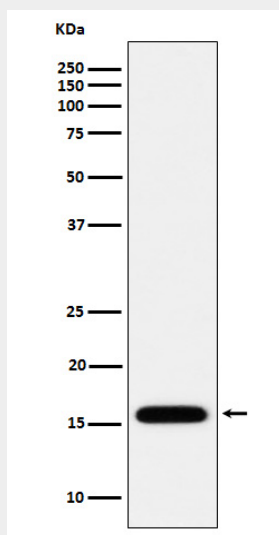
Highly expressed in liver.

MGST1 Antibody - Protocols

Provided below are standard protocols that you may find useful for product applications.

- [Western Blot](#)
- [Blocking Peptides](#)
- [Dot Blot](#)
- [Immunohistochemistry](#)
- [Immunofluorescence](#)
- [Immunoprecipitation](#)
- [Flow Cytometry](#)
- [Cell Culture](#)

MGST1 Antibody - Images



Western blot analysis of MGST1 expression in HepG2 cell lysate.