

GLU2B Antibody
Rabbit mAb
Catalog # AP92719

Specification

GLU2B Antibody - Product Information

| | |
|-----------------------------------|------------------------|
| Application | WB, IHC, ICC |
| Primary Accession | P14314 |
| Clonality | Monoclonal |
| Other Names | |
| G19P1; PCLD; PKCSH; PLD1; PRKCSH; | |
| Isotype | Rabbit IgG |
| Host | Rabbit |
| Calculated MW | 59425 Da |

GLU2B Antibody - Additional Information

| | |
|------------------------------|---|
| Purification | Affinity-chromatography |
| Immunogen | A synthesized peptide derived from human GLU2B |
| Description | Regulatory subunit of glucosidase II. |
| Storage Condition and Buffer | Rabbit IgG in phosphate buffered saline , pH 7.4, 150mM NaCl, 0.02% sodium azide and 50% glycerol. Store at +4°C short term. Store at -20°C long term. Avoid freeze / thaw cycle. |

GLU2B Antibody - Protein Information

Name PRKCSH {ECO:0000303|PubMed:28375157, ECO:0000312|HGNC:HGNC:9411}

Function

Regulatory subunit of glucosidase II that cleaves sequentially the 2 innermost alpha-1,3-linked glucose residues from the Glc(2)Man(9)GlcNAc(2) oligosaccharide precursor of immature glycoproteins (PubMed:10929008). Required for efficient PKD1/Polycystin-1 biogenesis and trafficking to the plasma membrane of the primary cilia (By similarity).

Cellular Location

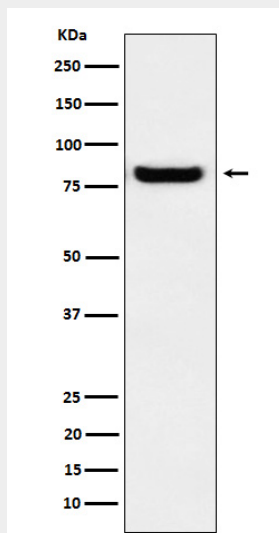
Endoplasmic reticulum {ECO:0000255|PROSITE- ProRule:PRU10138, ECO:0000305|PubMed:10929008}

GLU2B Antibody - Protocols

Provided below are standard protocols that you may find useful for product applications.

- [Western Blot](#)
- [Blocking Peptides](#)
- [Dot Blot](#)
- [Immunohistochemistry](#)
- [Immunofluorescence](#)
- [Immunoprecipitation](#)
- [Flow Cytometry](#)
- [Cell Culture](#)

GLU2B Antibody - Images



Western blot analysis of GLU2B expression in A431 cell lysate.