

**IGF2BP2 Antibody**  
Rabbit mAb  
Catalog # AP92690

## Specification

---

### IGF2BP2 Antibody - Product Information

Application	WB, IHC
Primary Accession	<a href="#">O9Y6M1</a>
Reactivity	Rat
Clonality	Monoclonal
<b>Other Names</b>	
Igf2bp2; IMP2; p62; VICKZ2;	
Isotype	Rabbit IgG
Host	Rabbit
Calculated MW	66121 Da

### IGF2BP2 Antibody - Additional Information

Purification	Affinity-chromatography
Immunogen	A synthesized peptide derived from human IGF2BP2
Description	Binds to the 5'-UTR of the insulin-like growth factor 2 (IGF2) mRNAs. Binding is isoform-specific. May regulate translation of target mRNAs.
Storage Condition and Buffer	Rabbit IgG in phosphate buffered saline , pH 7.4, 150mM NaCl, 0.02% sodium azide and 50% glycerol. Store at +4°C short term. Store at -20°C long term. Avoid freeze / thaw cycle.

### IGF2BP2 Antibody - Protein Information

**Name** IGF2BP2

**Synonyms** IMP2, VICKZ2

#### Function

RNA-binding factor that recruits target transcripts to cytoplasmic protein-RNA complexes (mRNPs). This transcript 'caging' into mRNPs allows mRNA transport and transient storage. It also modulates the rate and location at which target transcripts encounter the translational apparatus and shields them from endonuclease attacks or microRNA-mediated degradation (By similarity). Preferentially binds to N6-methyladenosine (m6A)-containing mRNAs and increases their stability (PubMed:<a href="http://www.uniprot.org/citations/29476152" target="\_blank">29476152</a>). Binds to the 5'-UTR of the insulin-like growth factor 2 (IGF2) mRNAs (PubMed:<a href="http://www.uniprot.org/citations/9891060" target="\_blank">9891060</a>). Binding is isoform-specific. Binds to beta-actin/ACTB and MYC transcripts. Increases MYC mRNA stability by binding to the coding region instability determinant (CRD) and binding is enhanced by

m6A-modification of the CRD (PubMed:<a href="http://www.uniprot.org/citations/29476152" target="\_blank">29476152</a>).

#### Cellular Location

Nucleus. Cytoplasm. Cytoplasm, P-body. Cytoplasm, Stress granule. Note=Localized in cytoplasmic mRNP granules containing untranslated mRNAs. Localizes at the connecting piece and the tail of the spermatozoa. In response to cellular stress, such as oxidative stress, recruited to stress granules

#### Tissue Location

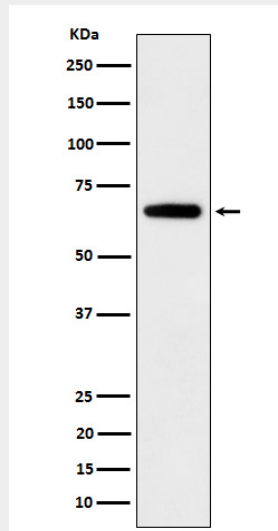
Expressed in oocytes, granulosa cells of small and growing follicles, Leydig cells, spermatogonia and semen (at protein level). Expressed in testicular cancer (at protein level). Expressed weakly in heart, placenta, skeletal muscle, bone marrow, colon, kidney, salivary glands, testis and pancreas. Detected in fetal liver, fetal ovary, gonocytes and interstitial cells of the testis

### IGF2BP2 Antibody - Protocols

Provided below are standard protocols that you may find useful for product applications.

- [Western Blot](#)
- [Blocking Peptides](#)
- [Dot Blot](#)
- [Immunohistochemistry](#)
- [Immunofluorescence](#)
- [Immunoprecipitation](#)
- [Flow Cytometry](#)
- [Cell Culture](#)

### IGF2BP2 Antibody - Images



Western blot analysis of IGF2BP2 expression in 293T cell lysate.