

CCL27 Antibody
Rabbit mAb
Catalog # AP92680

Specification

CCL27 Antibody - Product Information

| | |
|--|------------------------|
| Application | WB, FC, ICC |
| Primary Accession | O9Y4X3 |
| Reactivity | Rat |
| Clonality | Monoclonal |
| Other Names | |
| ALP; Ccl27; CTACK; CTAK; ILC; PESKY; SCYA27; Small inducible cytokine A27; | |
| Isotype | Rabbit IgG |
| Host | Rabbit |
| Calculated MW | 12618 Da |

CCL27 Antibody - Additional Information

| | |
|------------------------------|---|
| Purification | Affinity-chromatography |
| Immunogen | A synthesized peptide derived from human CCL27 |
| Description | Chemotactic factor that attracts skin-associated memory T-lymphocytes. May play a role in mediating homing of lymphocytes to cutaneous sites. Binds to CCR10. |
| Storage Condition and Buffer | Rabbit IgG in phosphate buffered saline , pH 7.4, 150mM NaCl, 0.02% sodium azide and 50% glycerol. Store at +4°C short term. Store at -20°C long term. Avoid freeze / thaw cycle. |

CCL27 Antibody - Protein Information

Name CCL27

Synonyms ILC, SCYA27

Function

Chemotactic factor that attracts skin-associated memory T- lymphocytes. May play a role in mediating homing of lymphocytes to cutaneous sites. Binds to CCR10.

Cellular Location

Secreted {ECO:0000250|UniProtKB:Q9Z1X0}.

Tissue Location

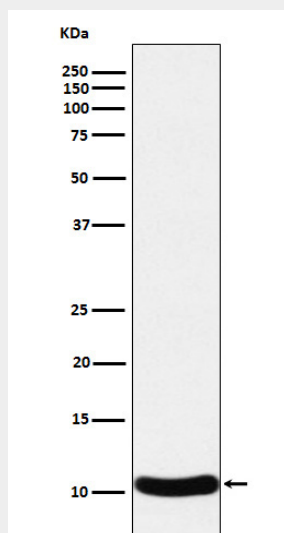
Testis, thymus, placenta, ovary and skin.

CCL27 Antibody - Protocols

Provided below are standard protocols that you may find useful for product applications.

- [Western Blot](#)
- [Blocking Peptides](#)
- [Dot Blot](#)
- [Immunohistochemistry](#)
- [Immunofluorescence](#)
- [Immunoprecipitation](#)
- [Flow Cytometry](#)
- [Cell Culture](#)

CCL27 Antibody - Images



Western blot analysis of CCL27 expression in Human CCL27 recombinant protein cell lysate.