

**GTF2I Antibody**  
Rabbit mAb  
Catalog # AP92676

## Specification

---

### GTF2I Antibody - Product Information

Application	WB, IHC, ICC
Primary Accession	<a href="#">P78347</a>
Reactivity	Rat
Clonality	Monoclonal
<b>Other Names</b>	
BAP135; BTKAP1; DIWS; Gtf2i; IB291; SPIN; WBS; WBSCR6;	
Isotype	Rabbit IgG
Host	Rabbit
Calculated MW	112416 Da

### GTF2I Antibody - Additional Information

Purification	<b>Affinity-chromatography</b>
Immunogen	<b>A synthesized peptide derived from GTF2I</b>
Description	<b>Interacts with the basal transcription machinery by coordinating the formation of a multiprotein complex at the C-FOS promoter, and linking specific signal responsive activator complexes.</b>
Storage Condition and Buffer	<b>Rabbit IgG in phosphate buffered saline , pH 7.4, 150mM NaCl, 0.02% sodium azide and 50% glycerol. Store at +4°C short term. Store at -20°C long term. Avoid freeze / thaw cycle.</b>

### GTF2I Antibody - Protein Information

**Name** GTF2I

**Synonyms** BAP135, WBSCR6

#### Function

Interacts with the basal transcription machinery by coordinating the formation of a multiprotein complex at the C-FOS promoter, and linking specific signal responsive activator complexes. Promotes the formation of stable high-order complexes of SRF and PHOX1 and interacts cooperatively with PHOX1 to promote serum-inducible transcription of a reporter gene driven by the C-FOS serum response element (SRE). Acts as a coregulator for USF1 by binding independently two promoter elements, a pyrimidine-rich initiator (Inr) and an upstream E-box. Required for the formation of functional ARID3A DNA- binding complexes and for activation of immunoglobulin heavy-chain transcription upon B-lymphocyte activation.

#### Cellular Location

Cytoplasm. Nucleus {ECO:0000255|PROSITE-ProRule:PRU00484, ECO:0000269|PubMed:10373551} Note=Colocalizes with BTK in the cytoplasm

#### Tissue Location

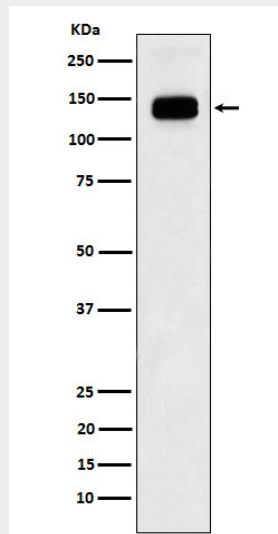
Ubiquitous. Isoform 1 is strongly expressed in fetal brain, weakly in adult brain, muscle, and lymphoblasts and is almost undetectable in other adult tissues, while the other isoforms are equally expressed in all adult tissues

#### GTF2I Antibody - Protocols

Provided below are standard protocols that you may find useful for product applications.

- [Western Blot](#)
- [Blocking Peptides](#)
- [Dot Blot](#)
- [Immunohistochemistry](#)
- [Immunofluorescence](#)
- [Immunoprecipitation](#)
- [Flow Cytometry](#)
- [Cell Culture](#)

#### GTF2I Antibody - Images



Western blot analysis of GTF2I expression in Jurkat cell lysate.