

**MRPL28 Antibody**  
Rabbit mAb  
Catalog # AP92667

## Specification

---

### MRPL28 Antibody - Product Information

Application	WB, FC, ICC, IP
Primary Accession	<a href="#">O13084</a>
Reactivity	Rat
Clonality	Monoclonal
<b>Other Names</b>	
L28mt; MAAT1; mrpl28; P15;	
Isotype	Rabbit IgG
Host	Rabbit
Calculated MW	30157 Da

### MRPL28 Antibody - Additional Information

Purification	Affinity-chromatography
Immunogen	A synthesized peptide derived from MRPL28
Description	Potentially represents an important therapeutic reagent for HLA-A24 patients. This antigen is recognized by tumor-infiltrating lymphocyte (TIL) 1290 in the context of HLA-A24.
Storage Condition and Buffer	Rabbit IgG in phosphate buffered saline , pH 7.4, 150mM NaCl, 0.02% sodium azide and 50% glycerol. Store at +4°C short term. Store at -20°C long term. Avoid freeze / thaw cycle.

### MRPL28 Antibody - Protein Information

**Name** MRPL28

**Synonyms** MAAT1

**Cellular Location**  
Mitochondrion

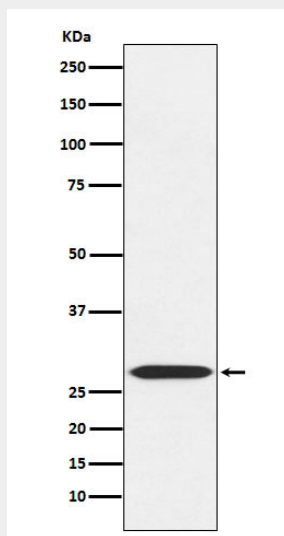
**Tissue Location**  
Found in a variety of normal tissues including spleen, testes, thymus, liver, kidney, brain, adrenal, lung and retinal tissue

### MRPL28 Antibody - Protocols

Provided below are standard protocols that you may find useful for product applications.

- [Western Blot](#)
- [Blocking Peptides](#)
- [Dot Blot](#)
- [Immunohistochemistry](#)
- [Immunofluorescence](#)
- [Immunoprecipitation](#)
- [Flow Cytometry](#)
- [Cell Culture](#)

#### MRPL28 Antibody - Images



Western blot analysis of MRPL28 expression in 293 cell lysate.