

Cofilin Antibody
Rabbit mAb
Catalog # AP92655

Specification

Cofilin Antibody - Product Information

Application	WB, IHC, ICC
Primary Accession	P23528
Reactivity	Rat
Clonality	Monoclonal
Other Names	
CFL; CFL1; Cofilin 1; Cofilin;	
Isotype	Rabbit IgG
Host	Rabbit
Calculated MW	18502 Da

Cofilin Antibody - Additional Information

Purification	Affinity-chromatography
Immunogen	A synthesized peptide derived from Cofilin
Description	Controls reversibly actin polymerization and depolymerization in a pH-sensitive manner. It has the ability to bind G- and F-actin in a 1:1 ratio of cofilin to actin. It is the major component of intranuclear and cytoplasmic actin rods.
Storage Condition and Buffer	Rabbit IgG in phosphate buffered saline , pH 7.4, 150mM NaCl, 0.02% sodium azide and 50% glycerol. Store at +4°C short term. Store at -20°C long term. Avoid freeze / thaw cycle.

Cofilin Antibody - Protein Information

Name CFL1

Synonyms CFL

Function

Binds to F-actin and exhibits pH-sensitive F-actin depolymerizing activity (PubMed:[11812157](http://www.uniprot.org/citations/11812157)). In conjunction with the subcortical maternal complex (SCMC), plays an essential role for zygotes to progress beyond the first embryonic cell divisions via regulation of actin dynamics (PubMed:[15580268](http://www.uniprot.org/citations/15580268)). Required for the centralization of the mitotic spindle and symmetric division of zygotes (By similarity). Plays a role in the regulation of cell morphology and cytoskeletal organization in epithelial cells (PubMed:[21834987](http://www.uniprot.org/citations/21834987)). Required for the up-regulation of atypical chemokine receptor ACKR2 from endosomal

compartment to cell membrane, increasing its efficiency in chemokine uptake and degradation (PubMed:23633677). Required for neural tube morphogenesis and neural crest cell migration (By similarity).

Cellular Location

Nucleus matrix. Cytoplasm, cytoskeleton. Cell projection, ruffle membrane; Peripheral membrane protein; Cytoplasmic side. Cell projection, lamellipodium membrane; Peripheral membrane protein; Cytoplasmic side. Cell projection, lamellipodium {ECO:0000250|UniProtKB:P18760}. Cell projection, growth cone {ECO:0000250|UniProtKB:P18760}. Cell projection, axon {ECO:0000250|UniProtKB:P18760}. Note=Colocalizes with the actin cytoskeleton in membrane ruffles and lamellipodia. Detected at the cleavage furrow and contractile ring during cytokinesis. Almost completely in nucleus in cells exposed to heat shock or 10% dimethyl sulfoxide

Tissue Location

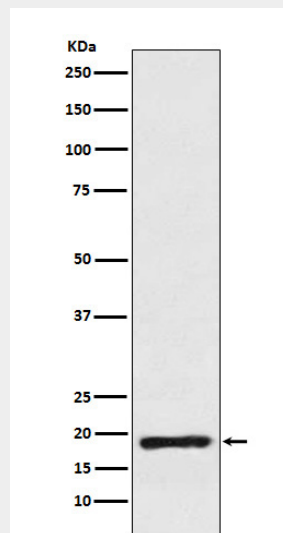
Widely distributed in various tissues.

Cofilin Antibody - Protocols

Provided below are standard protocols that you may find useful for product applications.

- [Western Blot](#)
- [Blocking Peptides](#)
- [Dot Blot](#)
- [Immunohistochemistry](#)
- [Immunofluorescence](#)
- [Immunoprecipitation](#)
- [Flow Cytometry](#)
- [Cell Culture](#)

Cofilin Antibody - Images



Western blot analysis of Cofilin expression in 293 cell lysate.