

**RCHY1 Antibody**  
Rabbit mAb  
Catalog # AP92639**Specification****RCHY1 Antibody - Product Information**

Application	WB, ICC, IP
Primary Accession	<a href="#">O96PM5</a>
Clonality	Monoclonal
<b>Other Names</b>	
ARNIP; CHIMP; hARNIP; hPirh2; PIRH2E; PIRH2F; RCHY1; RNF199; ZCHY; ZNF363;	

Isotype	Rabbit IgG
Host	Rabbit
Calculated MW	30110 Da

**RCHY1 Antibody - Additional Information**

Purification	Affinity-chromatography
Immunogen	A synthesized peptide derived from human RCHY1
Description	Mediates E3-dependent ubiquitination and proteasomal degradation of target proteins, including p53/TP53, HDAC1 and CDKN1B. Preferentially acts on tetrameric p53/TP53.
Storage Condition and Buffer	Rabbit IgG in phosphate buffered saline , pH 7.4, 150mM NaCl, 0.02% sodium azide and 50% glycerol. Store at +4°C short term. Store at -20°C long term. Avoid freeze / thaw cycle.

**RCHY1 Antibody - Protein Information****Name** RCHY1**Function**

E3 ubiquitin-protein ligase that mediates ubiquitination of target proteins, including p53/TP53, TP73, HDAC1 and CDKN1B (PubMed: [16914734](http://www.uniprot.org/citations/16914734), PubMed: [17721809](http://www.uniprot.org/citations/17721809), PubMed: [18006823](http://www.uniprot.org/citations/18006823), PubMed: [19043414](http://www.uniprot.org/citations/19043414), PubMed: [19483087](http://www.uniprot.org/citations/19483087), PubMed: [21994467](http://www.uniprot.org/citations/21994467)). Mediates ubiquitination and degradation of p53/TP53; preferentially acts on tetrameric p53/TP53 (PubMed: [19043414](http://www.uniprot.org/citations/19043414), PubMed: [19483087](http://www.uniprot.org/citations/19483087)). Catalyzes monoubiquitinates the translesion DNA polymerase POLH (PubMed:

<http://www.uniprot.org/citations/21791603> target="\_blank">21791603</a>). Involved in the ribosome-associated quality control (RQC) pathway, which mediates the extraction of incompletely synthesized nascent chains from stalled ribosomes: RCHY1 acts downstream of NEMF and recognizes CAT tails associated with stalled nascent chains, leading to their ubiquitination and degradation (PubMed:<a href="http://www.uniprot.org/citations/33909987" target="\_blank">33909987</a>).

#### Cellular Location

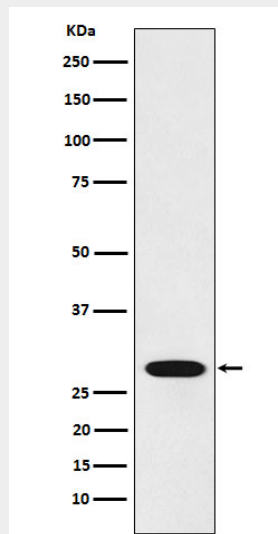
Nucleus. Nucleus speckle. Cytoplasm

#### RCHY1 Antibody - Protocols

Provided below are standard protocols that you may find useful for product applications.

- [Western Blot](#)
- [Blocking Peptides](#)
- [Dot Blot](#)
- [Immunohistochemistry](#)
- [Immunofluorescence](#)
- [Immunoprecipitation](#)
- [Flow Cytometry](#)
- [Cell Culture](#)

#### RCHY1 Antibody - Images



Western blot analysis of RCHY1 expression in 293 cell lysate.