

TRAF2 Antibody
Rabbit mAb
Catalog # AP92633

Specification

TRAF2 Antibody - Product Information

Application **WB, IHC, FC, ICC, IP**
Primary Accession **[O12933](#)**
Clonality **Monoclonal**
Other Names
TNF receptor associated factor 2; TRAF2; TRAP; TRAP3;

Isotype **Rabbit IgG**
Host **Rabbit**
Calculated MW **55859 Da**

TRAF2 Antibody - Additional Information

Purification **Affinity-chromatography**
Immunogen **A synthesized peptide derived from human TRAF2**
Description **Regulates activation of NF-kappa-B and JNK and plays a central role in the regulation of cell survival and apoptosis. Rabbit IgG in phosphate buffered saline , pH 7.4, 150mM NaCl, 0.02% sodium azide and 50% glycerol. Store at +4°C short term. Store at -20°C long term. Avoid freeze / thaw cycle.**
Storage Condition and Buffer

TRAF2 Antibody - Protein Information

Name TRAF2

Synonyms TRAP3

Function

Regulates activation of NF-kappa-B and JNK and plays a central role in the regulation of cell survival and apoptosis (PubMed:22212761). Required for normal antibody isotype switching from IgM to IgG. Has E3 ubiquitin-protein ligase activity and promotes 'Lys- 63'-linked ubiquitination of target proteins, such as BIRC3, RIPK1 and TICAM1. Is an essential constituent of several E3 ubiquitin-protein ligase complexes, where it promotes the ubiquitination of target proteins by bringing them into contact with other E3 ubiquitin ligases. Regulates BIRC2 and BIRC3 protein levels by inhibiting their autoubiquitination and subsequent degradation; this does not depend on the TRAF2 RING-type zinc finger domain. Plays a role in mediating activation of NF-kappa-B by EIF2AK2/PKR. In complex with BIRC2 or BIRC3, promotes ubiquitination of IKKε.

Cellular Location

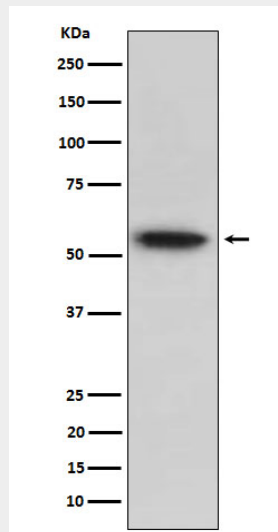
Cytoplasm

TRAF2 Antibody - Protocols

Provided below are standard protocols that you may find useful for product applications.

- [Western Blot](#)
- [Blocking Peptides](#)
- [Dot Blot](#)
- [Immunohistochemistry](#)
- [Immunofluorescence](#)
- [Immunoprecipitation](#)
- [Flow Cytometry](#)
- [Cell Culture](#)

TRAF2 Antibody - Images



Western blot analysis of TRAF2 expression in Raji cell lysate.