

**PROK1 Antibody**  
Rabbit mAb  
Catalog # AP92627

## Specification

---

### PROK1 Antibody - Product Information

Application	WB, FC
Primary Accession	<a href="#">P58294</a>
Clonality	Monoclonal
<b>Other Names</b>	
EGVEGF; Mambakine; PK1; PRK1; PROK1; Prokineticin-1;	
Isotype	Rabbit IgG
Host	Rabbit
Calculated MW	11715 Da

### PROK1 Antibody - Additional Information

Purification	Affinity-chromatography
Immunogen	A synthesized peptide derived from human PROK1
Description	Potently contracts gastrointestinal (GI) smooth muscle. Induces proliferation, migration and fenestration (the formation of membrane discontinuities) in capillary endothelial cells derived from endocrine glands.
Storage Condition and Buffer	Rabbit IgG in phosphate buffered saline , pH 7.4, 150mM NaCl, 0.02% sodium azide and 50% glycerol. Store at +4°C short term. Store at -20°C long term. Avoid freeze / thaw cycle.

### PROK1 Antibody - Protein Information

**Name** PROK1

#### Function

Potently contracts gastrointestinal (GI) smooth muscle. Induces proliferation, migration and fenestration (the formation of membrane discontinuities) in capillary endothelial cells derived from endocrine glands. Has little or no effect on a variety of other endothelial and non-endothelial cell types. Induces proliferation and differentiation, but not migration, of enteric neural crest cells. Directly influences neuroblastoma progression by promoting the proliferation and migration of neuroblastoma cells. Positively regulates PTGS2 expression and prostaglandin synthesis. May play a role in placentation. May play a role in normal and pathological testis angiogenesis.

#### Cellular Location

Secreted.

### Tissue Location

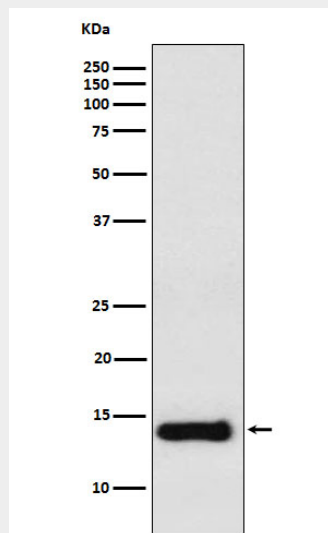
Localizes to glandular epithelium, stroma and vascular epithelial cells of first trimester decidua (at protein level). Up-regulated in first trimester decidua when compared with non- pregnant endometrium. Expressed in the steroidogenic glands, ovary, testis, adrenal and placenta.

### PROK1 Antibody - Protocols

Provided below are standard protocols that you may find useful for product applications.

- [Western Blot](#)
- [Blocking Peptides](#)
- [Dot Blot](#)
- [Immunohistochemistry](#)
- [Immunofluorescence](#)
- [Immunoprecipitation](#)
- [Flow Cytometry](#)
- [Cell Culture](#)

### PROK1 Antibody - Images



Western blot analysis of PROK1 expression in Raw264.7 cell lysate.