

CBR1 Antibody
Rabbit mAb
Catalog # AP92624

Specification

CBR1 Antibody - Product Information

Application	WB, IP
Primary Accession	P16152
Reactivity	Rat
Clonality	Monoclonal
Other Names	
CBR1; CRN; SDR21C1;	
Isotype	Rabbit IgG
Host	Rabbit
Calculated MW	30375 Da

CBR1 Antibody - Additional Information

Purification	Affinity-chromatography
Immunogen	A synthesized peptide derived from human CBR1
Description	NADPH-dependent reductase with broad substrate specificity. Catalyzes the reduction of a wide variety of carbonyl compounds including quinones, prostaglandins, menadione, plus various xenobiotics.
Storage Condition and Buffer	Rabbit IgG in phosphate buffered saline , pH 7.4, 150mM NaCl, 0.02% sodium azide and 50% glycerol. Store at +4°C short term. Store at -20°C long term. Avoid freeze / thaw cycle.

CBR1 Antibody - Protein Information

Name CBR1 ([HGNC:1548](#))

Synonyms CBR, CRN, SDR21C1

Function

NADPH-dependent reductase with broad substrate specificity. Catalyzes the reduction of a wide variety of carbonyl compounds including quinones, prostaglandins, menadione, plus various xenobiotics. Catalyzes the reduction of the antitumor anthracyclines doxorubicin and daunorubicin to the cardiotoxic compounds doxorubicinol and daunorubicinol (PubMed: [15799708](http://www.uniprot.org/citations/15799708), PubMed: [17344335](http://www.uniprot.org/citations/17344335), PubMed: [17912391](http://www.uniprot.org/citations/17912391), PubMed: [18449627](http://www.uniprot.org/citations/18449627)).

<http://www.uniprot.org/citations/18826943> target="_blank">18826943, PubMed:1921984, PubMed:7005231). Can convert prostaglandin E to prostaglandin F2-alpha (By similarity). Can bind glutathione, which explains its higher affinity for glutathione- conjugated substrates. Catalyzes the reduction of S-nitrosoglutathione (PubMed:17344335, PubMed:18826943). In addition, participates in the glucocorticoid metabolism by catalyzing the NADPH-dependent cortisol/corticosterone into 20beta-dihydrocortisol (20b-DHF) or 20beta-corticosterone (20b-DHB), which are weak agonists of NR3C1 and NR3C2 in adipose tissue (PubMed:28878267).

Cellular Location

Cytoplasm.

Tissue Location

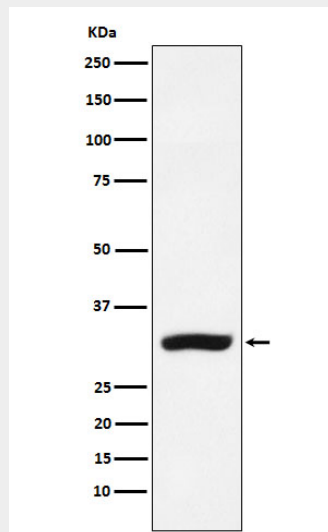
Expressed in kidney (at protein level).

CBR1 Antibody - Protocols

Provided below are standard protocols that you may find useful for product applications.

- [Western Blot](#)
- [Blocking Peptides](#)
- [Dot Blot](#)
- [Immunohistochemistry](#)
- [Immunofluorescence](#)
- [Immunoprecipitation](#)
- [Flow Cytometry](#)
- [Cell Culture](#)

CBR1 Antibody - Images



Western blot analysis of CBR1 expression in MCF-7 cell lysate.