

Fetuin A Antibody
Rabbit mAb
Catalog # AP92621

Specification

Fetuin A Antibody - Product Information

Application	WB, IP
Primary Accession	P02765
Clonality	Monoclonal
Other Names	
16G2; A2HS; AHS; Ahsg; FETUA; FETUB; FetuinA; FetuinB; Gugu; HSGA; IRL685; PRO2743;	
Isotype	Rabbit IgG
Host	Rabbit
Calculated MW	39341 Da

Fetuin A Antibody - Additional Information

Purification	Affinity-chromatography
Immunogen	A synthesized peptide derived from human Fetuin A
Description	Promotes endocytosis, possesses opsonic properties and influences the mineral phase of bone. Shows affinity for calcium and barium ions.
Storage Condition and Buffer	Rabbit IgG in phosphate buffered saline , pH 7.4, 150mM NaCl, 0.02% sodium azide and 50% glycerol. Store at +4°C short term. Store at -20°C long term. Avoid freeze / thaw cycle.

Fetuin A Antibody - Protein Information

Name AHSG

Synonyms FETUA

Function

Promotes endocytosis, possesses opsonic properties and influences the mineral phase of bone. Shows affinity for calcium and barium ions.

Cellular Location

Secreted.

Tissue Location

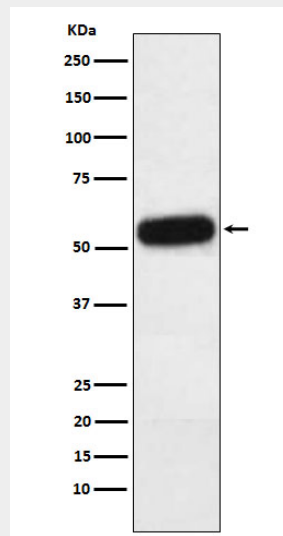
Synthesized in liver and selectively concentrated in bone matrix. Secreted in plasma. It is also found in dentin in much higher quantities than other plasma proteins

Fetuin A Antibody - Protocols

Provided below are standard protocols that you may find useful for product applications.

- [Western Blot](#)
- [Blocking Peptides](#)
- [Dot Blot](#)
- [Immunohistochemistry](#)
- [Immunofluorescence](#)
- [Immunoprecipitation](#)
- [Flow Cytometry](#)
- [Cell Culture](#)

Fetuin A Antibody - Images



Western blot analysis of Fetuin A expression in Human plasma lysate.