

COL11A1 Antibody
Rabbit mAb
Catalog # AP92612

Specification

COL11A1 Antibody - Product Information

Application	WB
Primary Accession	P12107
Clonality	Monoclonal
Other Names	
COL11A1; COLL6; Collagen alpha 1; collagen XI alpha 1; STL2; STL3;	
Isotype	Rabbit IgG
Host	Rabbit
Calculated MW	181065 Da

COL11A1 Antibody - Additional Information

Purification	Affinity-chromatography
Immunogen	A synthesized peptide derived from human COL11A1
Description	May play an important role in fibrillogenesis by controlling lateral growth of collagen II fibrils.
Storage Condition and Buffer	Rabbit IgG in phosphate buffered saline , pH 7.4, 150mM NaCl, 0.02% sodium azide and 50% glycerol. Store at +4°C short term. Store at -20°C long term. Avoid freeze / thaw cycle.

COL11A1 Antibody - Protein Information

Name COL11A1

Synonyms COLL6

Function

May play an important role in fibrillogenesis by controlling lateral growth of collagen II fibrils.

Cellular Location

Secreted, extracellular space, extracellular matrix {ECO:0000255|PROSITE-ProRule:PRU00793}

Tissue Location

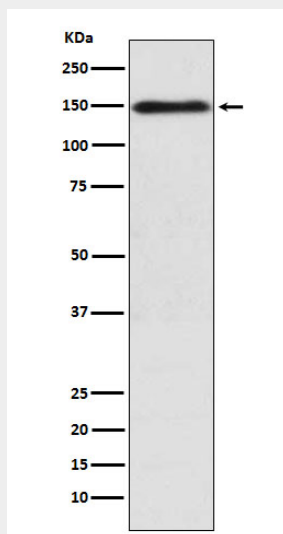
Cartilage, placenta and some tumor or virally transformed cell lines. Isoforms using exon IIA or IIB are found in the cartilage while isoforms using only exon IIB are found in the tendon

COL11A1 Antibody - Protocols

Provided below are standard protocols that you may find useful for product applications.

- [Western Blot](#)
- [Blocking Peptides](#)
- [Dot Blot](#)
- [Immunohistochemistry](#)
- [Immunofluorescence](#)
- [Immunoprecipitation](#)
- [Flow Cytometry](#)
- [Cell Culture](#)

COL11A1 Antibody - Images



Western blot analysis of COL11A1 expression in K562 cell lysate.