

TAF1 Antibody
Rabbit mAb
Catalog # AP92607

Specification

TAF1 Antibody - Product Information

Application	WB
Primary Accession	P21675
Reactivity	Rat
Clonality	Monoclonal
Other Names	
BA2R; CCG1; CCGS; DYT3; N TAF1; NSCL2; p250; TAF1; TAF2A; TAFII250; XDP;	
Isotype	Rabbit IgG
Host	Rabbit
Calculated MW	212677 Da

TAF1 Antibody - Additional Information

Purification	Affinity-chromatography
Immunogen	A synthesized peptide derived from human TAF1
Description	Largest component and core scaffold of the TFIID basal transcription factor complex. Contains novel N- and C-terminal Ser/Thr kinase domains which can autophosphorylate or transphosphorylate other transcription factors.
Storage Condition and Buffer	Rabbit IgG in phosphate buffered saline , pH 7.4, 150mM NaCl, 0.02% sodium azide and 50% glycerol. Store at +4°C short term. Store at -20°C long term. Avoid freeze / thaw cycle.

TAF1 Antibody - Protein Information

Name TAF1 ([HGNC:11535](#))

Synonyms BA2R, CCG1, CCGS, TAF2A

Function

The TFIID basal transcription factor complex plays a major role in the initiation of RNA polymerase II (Pol II)-dependent transcription (PubMed: [33795473](http://www.uniprot.org/citations/33795473)). TFIID recognizes and binds promoters with or without a TATA box via its subunit TBP, a TATA-box-binding protein, and promotes assembly of the pre-initiation complex (PIC) (PubMed: [33795473](http://www.uniprot.org/citations/33795473)). The TFIID complex consists of TBP and TBP-associated factors (TAFs), including TAF1, TAF2, TAF3, TAF4, TAF5, TAF6, TAF7, TAF8, TAF9, TAF10, TAF11, TAF12 and TAF13 (PubMed: [33795473](http://www.uniprot.org/citations/33795473))

target="_blank">33795473). TAF1 is the largest component and core scaffold of the TFIID complex, involved in nucleating complex assembly (PubMed:25412659, PubMed:27007846, PubMed:33795473). TAF1 forms a promoter DNA binding subcomplex of TFIID, together with TAF7 and TAF2 (PubMed:33795473). Contains novel N- and C-terminal Ser/Thr kinase domains which can autophosphorylate or transphosphorylate other transcription factors (PubMed:25412659, PubMed:8625415). Phosphorylates TP53 on 'Thr-55' which leads to MDM2- mediated degradation of TP53 (PubMed:25412659). Phosphorylates GTF2A1 and GTF2F1 on Ser residues (PubMed:25412659). Possesses DNA-binding activity (PubMed:25412659). Essential for progression of the G1 phase of the cell cycle (PubMed:11278496, PubMed:15053879, PubMed:2038334, PubMed:8450888, PubMed:8625415, PubMed:9660973, PubMed:9858607). Exhibits histone acetyltransferase activity towards histones H3 and H4 (PubMed:15870300).

Cellular Location

Nucleus

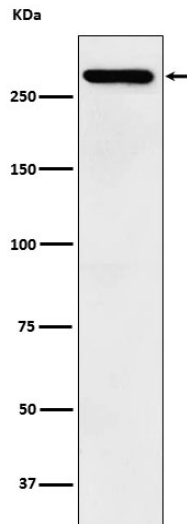
TAF1 Antibody - Protocols

Provided below are standard protocols that you may find useful for product applications.

- [Western Blot](#)
- [Blocking Peptides](#)
- [Dot Blot](#)
- [Immunohistochemistry](#)
- [Immunofluorescence](#)
- [Immunoprecipitation](#)
- [Flow Cytometry](#)
- [Cell Culture](#)

TAF1 Antibody - Images





Western blot analysis of TAF1 expression in SH-SY5Y cell lysate.