

**JAG2 Antibody**  
Rabbit mAb  
Catalog # AP92602

## Specification

---

### JAG2 Antibody - Product Information

Application	WB
Primary Accession	<a href="#">O9Y219</a>
Clonality	Monoclonal
<b>Other Names</b>	
HJ2; JAG2; Jagged2; SER2; Syndactylism;	
Isotype	Rabbit IgG
Host	Rabbit
Calculated MW	133367 Da

### JAG2 Antibody - Additional Information

Purification	Affinity-chromatography
Immunogen	A synthesized peptide derived from human JAG2
Description	Jagged 2 is a Notch ligand involved in the mediation of Notch signaling. Jagged 2 is expressed in heart, placenta and skeletal muscle and to a lesser extent in pancreas. Very low expression in brain, lung, liver and kidney.
Storage Condition and Buffer	Rabbit IgG in phosphate buffered saline , pH 7.4, 150mM NaCl, 0.02% sodium azide and 50% glycerol. Store at +4°C short term. Store at -20°C long term. Avoid freeze / thaw cycle.

### JAG2 Antibody - Protein Information

**Name** JAG2

#### Function

Putative Notch ligand involved in the mediation of Notch signaling. Involved in limb development (By similarity).

#### Cellular Location

Membrane; Single-pass type I membrane protein.

#### Tissue Location

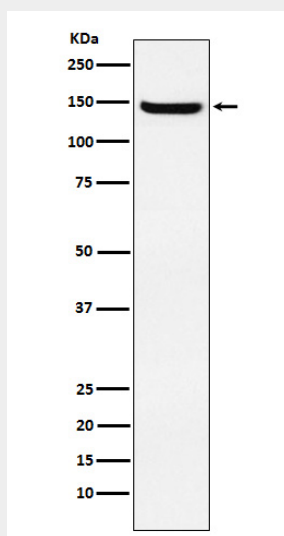
Expressed in heart, placenta and skeletal muscle and to a lesser extent in pancreas. Very low expression in brain, lung, liver and kidney

## JAG2 Antibody - Protocols

Provided below are standard protocols that you may find useful for product applications.

- [Western Blot](#)
- [Blocking Peptides](#)
- [Dot Blot](#)
- [Immunohistochemistry](#)
- [Immunofluorescence](#)
- [Immunoprecipitation](#)
- [Flow Cytometry](#)
- [Cell Culture](#)

## JAG2 Antibody - Images



Western blot analysis of JAG2 expression in HUVEC cell lysate.