

**RECK Antibody (Center)**  
**Affinity Purified Rabbit Polyclonal Antibody (Pab)**  
**Catalog # AP9259c**

**Specification**

---

**RECK Antibody (Center) - Product Information**

Application	WB, IHC-P, FC,E
Primary Accession	<a href="#">O95980</a>
Reactivity	Human
Host	Rabbit
Clonality	Polyclonal
Isotype	Rabbit IgG
Calculated MW	106457
Antigen Region	430-456

**RECK Antibody (Center) - Additional Information**

**Gene ID** 8434

**Other Names**

Reversion-inducing cysteine-rich protein with Kazal motifs, hRECK, Suppressor of tumorigenicity 15 protein, RECK, ST15

**Target/Specificity**

This RECK antibody is generated from rabbits immunized with a KLH conjugated synthetic peptide between 430-456 amino acids from the Central region of human RECK.

**Dilution**

WB~~1:1000  
IHC-P~~1:10~50  
FC~~1:10~50

**Format**

Purified polyclonal antibody supplied in PBS with 0.09% (W/V) sodium azide. This antibody is purified through a protein A column, followed by peptide affinity purification.

**Storage**

Maintain refrigerated at 2-8°C for up to 2 weeks. For long term storage store at -20°C in small aliquots to prevent freeze-thaw cycles.

**Precautions**

RECK Antibody (Center) is for research use only and not for use in diagnostic or therapeutic procedures.

**RECK Antibody (Center) - Protein Information**

**Name** RECK {ECO:0000303|PubMed:9789069, ECO:0000312|HGNC:HGNC:11345}

**Function** Functions together with ADGRA2 to enable brain endothelial cells to selectively respond to Wnt7 signals (WNT7A or WNT7B) (PubMed:[28289266](#), PubMed:[30026314](#)). Plays a key role in Wnt7-specific responses: required for central nervous system (CNS) angiogenesis and blood-brain barrier regulation (By similarity). Acts as a Wnt7-specific coactivator of canonical Wnt signaling by decoding Wnt ligands: acts by interacting specifically with the disordered linker region of Wnt7, thereby conferring ligand selectivity for Wnt7 (PubMed:[30026314](#)). ADGRA2 is then required to deliver RECK-bound Wnt7 to frizzled by assembling a higher-order RECK-ADGRA2-Fzd-LRP5-LRP6 complex (PubMed:[30026314](#)). Also acts as a serine protease inhibitor: negatively regulates matrix metalloproteinase-9 (MMP9) by suppressing MMP9 secretion and by direct inhibition of its enzymatic activity (PubMed:[18194466](#), PubMed:[9789069](#)). Also inhibits metalloproteinase activity of MMP2 and MMP14 (MT1-MMP) (PubMed:[9789069](#)).

#### Cellular Location

Cell membrane; Lipid-anchor, GPI-anchor

#### Tissue Location

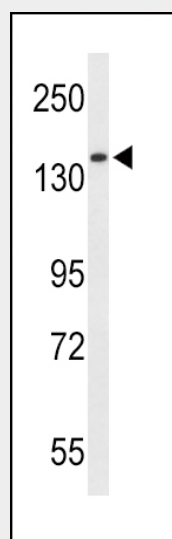
Expressed in various tissues and untransformed cells (PubMed:[9789069](#)). It is undetectable in tumor-derived cell lines and oncogenically transformed cells (PubMed:[9789069](#))

### RECK Antibody (Center) - Protocols

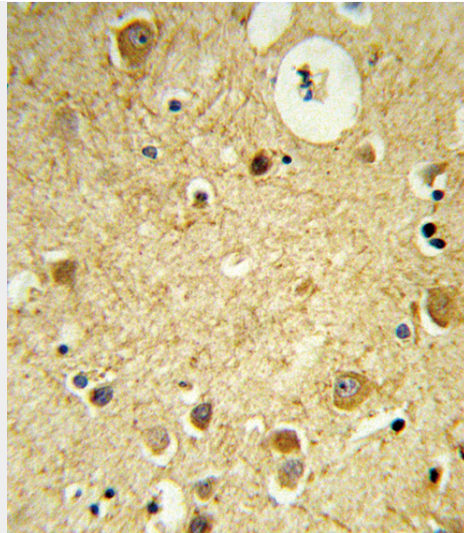
Provided below are standard protocols that you may find useful for product applications.

- [Western Blot](#)
- [Blocking Peptides](#)
- [Dot Blot](#)
- [Immunohistochemistry](#)
- [Immunofluorescence](#)
- [Immunoprecipitation](#)
- [Flow Cytometry](#)
- [Cell Culture](#)

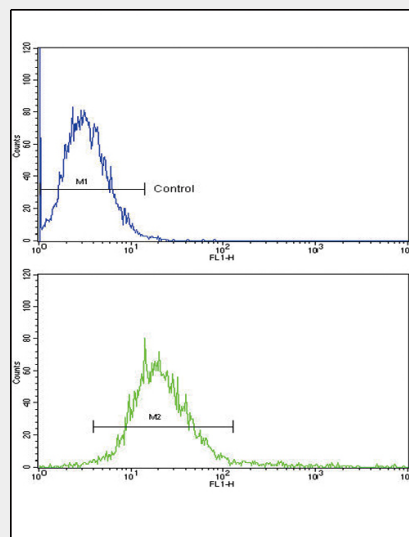
### RECK Antibody (Center) - Images



Western blot analysis of RECK Antibody (Center) (Cat. #AP9259c) in HepG2 cell line lysates (35ug/lane). RECK (arrow) was detected using the purified Pab.



Formalin-fixed and paraffin-embedded human brain tissue reacted with RECK Antibody (Center), which was peroxidase-conjugated to the secondary antibody, followed by DAB staining. This data demonstrates the use of this antibody for immunohistochemistry; clinical relevance has not been evaluated.



RECK Antibody (Center) (Cat. #AP9259c) flow cytometric analysis of k562 cells (bottom histogram) compared to a negative control cell (top histogram). FITC-conjugated goat-anti-rabbit secondary antibodies were used for the analysis.

### **RECK Antibody (Center) - Background**

RECK is a cysteine-rich, extracellular protein with protease inhibitor-like domains whose expression is suppressed strongly in many tumors and cells transformed by various kinds of oncogenes. In normal cells, this membrane-anchored glycoprotein may serve as a negative regulator for matrix metalloproteinase-9, a key enzyme involved in tumor invasion and metastasis.

### **RECK Antibody (Center) - References**

- Du, Y.Y., et al., World J. Gastroenterol. 16 (7), 904-908 (2010)
- Pesta, M., et al., Anticancer Res. 29 (11), 4535-4539 (2009)
- Takahashi, C., et al., Tanpakushitsu Kakusan Koso 54 (13), 1742-1746 (2009)