

STF1 Antibody
Rabbit mAb
Catalog # AP92597

Specification

STF1 Antibody - Product Information

Application	WB
Primary Accession	Q13285
Reactivity	Rat
Clonality	Monoclonal
Other Names	
AD4BP; ELP; FTZ1; FTZF1; hSF 1; NR5A1; POF7; SF1; SPGF8; SRXY3; STF1;	
Isotype	Rabbit IgG
Host	Rabbit
Calculated MW	51636 Da

STF1 Antibody - Additional Information

Purification	Affinity-chromatography
Immunogen	A synthesized peptide derived from human STF1
Description	Transcriptional activator. Seems to be essential for sexual differentiation and formation of the primary steroidogenic tissues. Binds to the Ad4 site found in the promoter region of steroidogenic P450 genes such as CYP11A, CYP11B and CYP21B.
Storage Condition and Buffer	Rabbit IgG in phosphate buffered saline , pH 7.4, 150mM NaCl, 0.02% sodium azide and 50% glycerol. Store at +4°C short term. Store at -20°C long term. Avoid freeze / thaw cycle.

STF1 Antibody - Protein Information

Name NR5A1

Synonyms AD4BP, FTZF1, SF1

Function

Transcriptional activator. Essential for sexual differentiation and formation of the primary steroidogenic tissues (PubMed: [27378692](http://www.uniprot.org/citations/27378692)). Binds to the Ad4 site found in the promoter region of steroidogenic P450 genes such as CYP11A, CYP11B and CYP21B. Also regulates the AMH/Muellerian inhibiting substance gene as well as the AHCH and STAR genes. 5'-YCAAGGYC-3' and 5'-RRAGGTCA-3' are the consensus sequences for the recognition by NR5A1 (PubMed: [27378692](http://www.uniprot.org/citations/27378692)). The

SFPQ-NONO-NR5A1 complex binds to the CYP17 promoter and regulates basal and cAMP-dependent transcriptional activity. Binds phosphatidylcholine (By similarity). Binds phospholipids with a phosphatidylinositol (PI) headgroup, in particular PI(3,4)P2 and PI(3,4,5)P3. Activated by the phosphorylation of NR5A1 by HIPK3 leading to increased steroidogenic gene expression upon cAMP signaling pathway stimulation.

Cellular Location

Nucleus {ECO:0000255|PROSITE-ProRule:PRU00407, ECO:0000269|PubMed:11479297, ECO:0000269|PubMed:27490115}

Tissue Location

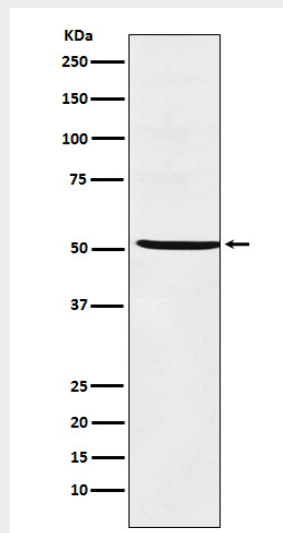
High expressed in the adrenal cortex, the ovary, the testis, and the spleen (PubMed:9177385)

STF1 Antibody - Protocols

Provided below are standard protocols that you may find useful for product applications.

- [Western Blot](#)
- [Blocking Peptides](#)
- [Dot Blot](#)
- [Immunohistochemistry](#)
- [Immunofluorescence](#)
- [Immunoprecipitation](#)
- [Flow Cytometry](#)
- [Cell Culture](#)

STF1 Antibody - Images



Western blot analysis of STF1 expression in Jutkat cell lysate.