

PCBP1 Antibody
Rabbit mAb
Catalog # AP92594

Specification

PCBP1 Antibody - Product Information

Application	WB, IP
Primary Accession	Q15365
Reactivity	Rat
Clonality	Monoclonal
Other Names	
Alpha-CP1; hnRNP E1; HNRPE1; HNRPX; PCBP1;	
Isotype	Rabbit IgG
Host	Rabbit
Calculated MW	37498 Da

PCBP1 Antibody - Additional Information

Purification	Affinity-chromatography
Immunogen	A synthesized peptide derived from human PCBP1
Description	Single-stranded nucleic acid binding protein that binds preferentially to oligo dC.
Storage Condition and Buffer	Rabbit IgG in phosphate buffered saline , pH 7.4, 150mM NaCl, 0.02% sodium azide and 50% glycerol. Store at +4°C short term. Store at -20°C long term. Avoid freeze / thaw cycle.

PCBP1 Antibody - Protein Information

Name PCBP1 {ECO:0000303|PubMed:7607214, ECO:0000312|HGNC:HGNC:8647}

Function

Single-stranded nucleic acid binding protein that binds preferentially to oligo dC (PubMed:15731341, PubMed:7556077, PubMed:7607214, PubMed:8152927). Together with PCBP2, required for erythropoiesis, possibly by regulating mRNA splicing (By similarity).

Cellular Location

Nucleus. Cytoplasm. Note=Loosely bound in the nucleus (PubMed:7607214). May shuttle between the nucleus and the cytoplasm (PubMed:7607214).

Tissue Location

Abundantly expressed in skeletal muscle, thymus and peripheral blood leukocytes while a lower

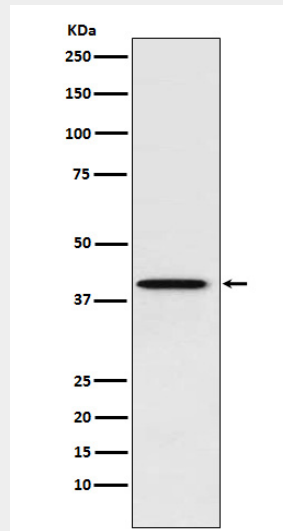
expression is observed in prostate, spleen, testis, ovary, small intestine, heart, liver, adrenal and thyroid glands.

PCBP1 Antibody - Protocols

Provided below are standard protocols that you may find useful for product applications.

- [Western Blot](#)
- [Blocking Peptides](#)
- [Dot Blot](#)
- [Immunohistochemistry](#)
- [Immunofluorescence](#)
- [Immunoprecipitation](#)
- [Flow Cytometry](#)
- [Cell Culture](#)

PCBP1 Antibody - Images



Western blot analysis of PCBP1 expression in HeLa cell lysate.