

**MAT2A Antibody**  
Rabbit mAb  
Catalog # AP92593

## Specification

---

### MAT2A Antibody - Product Information

Application	WB, ICC
Primary Accession	<a href="#">P31153</a>
Reactivity	Rat
Clonality	Monoclonal
<b>Other Names</b>	
AMS2; MAT 2; MAT 2A; MAT II; Mat2a; MATA2; MATII; SAMS 2; SAMS2;	
Isotype	Rabbit IgG
Host	Rabbit
Calculated MW	43661 Da

### MAT2A Antibody - Additional Information

Purification	Affinity-chromatography
Immunogen	A synthesized peptide derived from human MAT2A
Description	Catalyzes the formation of S-adenosylmethionine from methionine and ATP.
Storage Condition and Buffer	Rabbit IgG in phosphate buffered saline , pH 7.4, 150mM NaCl, 0.02% sodium azide and 50% glycerol. Store at +4°C short term. Store at -20°C long term. Avoid freeze / thaw cycle.

### MAT2A Antibody - Protein Information

**Name** MAT2A

**Synonyms** AMS2, MATA2

#### Function

Catalyzes the formation of S-adenosylmethionine from methionine and ATP. The reaction comprises two steps that are both catalyzed by the same enzyme: formation of S-adenosylmethionine (AdoMet) and triphosphate, and subsequent hydrolysis of the triphosphate.

#### Tissue Location

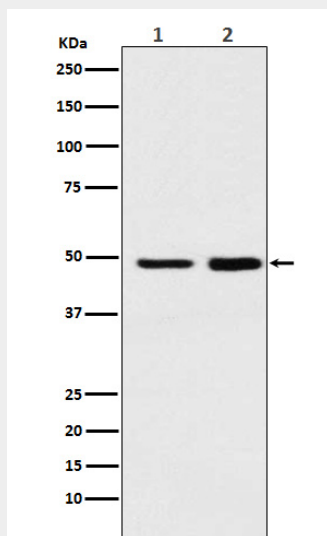
Detected in kidney..

### MAT2A Antibody - Protocols

Provided below are standard protocols that you may find useful for product applications.

- [Western Blot](#)
- [Blocking Peptides](#)
- [Dot Blot](#)
- [Immunohistochemistry](#)
- [Immunofluorescence](#)
- [Immunoprecipitation](#)
- [Flow Cytometry](#)
- [Cell Culture](#)

### **MAT2A Antibody - Images**



Western blot analysis of MAT2A expression in (1) Ramos cell lysate; (2) Mouse spleen lysate.