

ETV6 Antibody
Rabbit mAb
Catalog # AP92583

Specification

ETV6 Antibody - Product Information

Application **WB, FC, ICC**
Primary Accession [P41212](#)
Clonality **Monoclonal**
Other Names
ETV6; Tel; TEL oncogene; TEL/ABL; TEL1;

Isotype **Rabbit IgG**
Host **Rabbit**
Calculated MW **53000 Da**

ETV6 Antibody - Additional Information

Purification **Affinity-chromatography**
Immunogen **A synthesized peptide derived from human ETV6**
Description **Transcriptional repressor; binds to the DNA sequence 5'-CCGGAAGT-3'.**
Storage Condition and Buffer **Rabbit IgG in phosphate buffered saline , pH 7.4, 150mM NaCl, 0.02% sodium azide and 50% glycerol. Store at +4°C short term. Store at -20°C long term. Avoid freeze / thaw cycle.**

ETV6 Antibody - Protein Information

Name ETV6

Synonyms TEL, TEL1

Function

Transcriptional repressor; binds to the DNA sequence 5'- CCGGAAGT-3'. Plays a role in hematopoiesis and malignant transformation.

Cellular Location

Nucleus.

Tissue Location

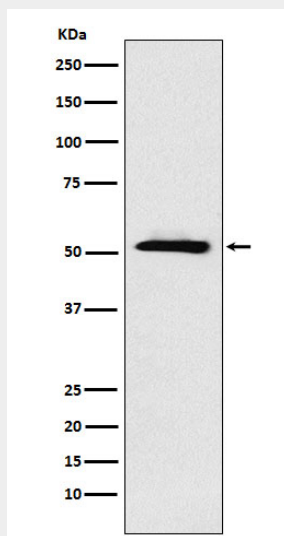
Ubiquitous.

ETV6 Antibody - Protocols

Provided below are standard protocols that you may find useful for product applications.

- [Western Blot](#)
- [Blocking Peptides](#)
- [Dot Blot](#)
- [Immunohistochemistry](#)
- [Immunofluorescence](#)
- [Immunoprecipitation](#)
- [Flow Cytometry](#)
- [Cell Culture](#)

ETV6 Antibody - Images



Western blot analysis of ETV6 expression in A431 cell lysate.