

**ANPRB Antibody**  
Rabbit mAb  
Catalog # AP92581

## Specification

---

### ANPRB Antibody - Product Information

|   |                        |
|---|------------------------|
| Application   | WB                     |
| Primary Accession   | <a href="#">P20594</a> |
| Reactivity  | Rat                    |
| Clonality   | Monoclonal             |
| <b>Other Names</b>  |                        |
| AMDM; ANPB; ANPRB; GCB; GUC2B; GUCY2B; Npr2; NPRB; NPRBi; |                        |
| Isotype   | Rabbit IgG             |
| Host  | Rabbit                 |
| Calculated MW   | 117022 Da              |

### ANPRB Antibody - Additional Information

|                              |   |
|------------------------------|---|
| Purification                 | Affinity-chromatography   |
| Immunogen                    | A synthesized peptide derived from human ANPRB  |
| Description                  | Receptor for the C-type natriuretic peptide NPPC/CNP hormone. Has guanylate cyclase activity upon binding of its ligand. May play a role in the regulation of skeletal growth.    |
| Storage Condition and Buffer | Rabbit IgG in phosphate buffered saline , pH 7.4, 150mM NaCl, 0.02% sodium azide and 50% glycerol. Store at +4°C short term. Store at -20°C long term. Avoid freeze / thaw cycle. |

### ANPRB Antibody - Protein Information

**Name** NPR2

**Synonyms** ANPRB

#### Function

Receptor for the C-type natriuretic peptide NPPC/CNP hormone. Has guanylate cyclase activity upon binding of its ligand. May play a role in the regulation of skeletal growth.

#### Cellular Location

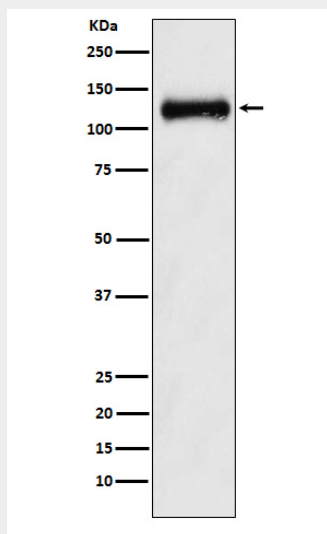
Cell membrane; Single-pass type I membrane protein

### ANPRB Antibody - Protocols

Provided below are standard protocols that you may find useful for product applications.

- [Western Blot](#)
- [Blocking Peptides](#)
- [Dot Blot](#)
- [Immunohistochemistry](#)
- [Immunofluorescence](#)
- [Immunoprecipitation](#)
- [Flow Cytometry](#)
- [Cell Culture](#)

#### **ANPRB Antibody - Images**



Western blot analysis of ANPRB expression in Human fetal kidney lysate.