

VEGFD Antibody
Rabbit mAb
Catalog # AP92554

Specification

VEGFD Antibody - Product Information

Application	WB, IHC, FC, ICC
Primary Accession	O43915
Reactivity	Rat
Clonality	Monoclonal
Other Names	
FIGF; VEGFD;	
Isotype	Rabbit IgG
Host	Rabbit
Calculated MW	40444 Da

VEGFD Antibody - Additional Information

Purification	Affinity-chromatography
Immunogen	A synthesized peptide derived from human VEGFD
Description	Growth factor active in angiogenesis, lymphangiogenesis and endothelial cell growth, stimulating their proliferation and migration and also has effects on the permeability of blood vessels.
Storage Condition and Buffer	Rabbit IgG in phosphate buffered saline , pH 7.4, 150mM NaCl, 0.02% sodium azide and 50% glycerol. Store at +4°C short term. Store at -20°C long term. Avoid freeze / thaw cycle.

VEGFD Antibody - Protein Information

Name VEGFD ([HGNC:3708](#))

Synonyms FIGF

Function

Growth factor active in angiogenesis, lymphangiogenesis and endothelial cell growth, stimulating their proliferation and migration and also has effects on the permeability of blood vessels. May function in the formation of the venous and lymphatic vascular systems during embryogenesis, and also in the maintenance of differentiated lymphatic endothelium in adults. Binds and activates VEGFR-2 (KDR/FLK1) and VEGFR-3 (FLT4) receptors.

Cellular Location

Secreted.

Tissue Location

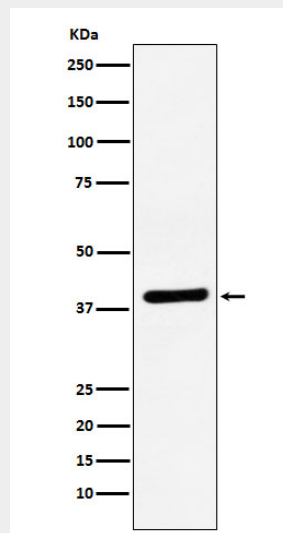
Highly expressed in lung, heart, small intestine and fetal lung, and at lower levels in skeletal muscle, colon, and pancreas

VEGFD Antibody - Protocols

Provided below are standard protocols that you may find useful for product applications.

- [Western Blot](#)
- [Blocking Peptides](#)
- [Dot Blot](#)
- [Immunohistochemistry](#)
- [Immunofluorescence](#)
- [Immunoprecipitation](#)
- [Flow Cytometry](#)
- [Cell Culture](#)

VEGFD Antibody - Images



Western blot analysis of VEGFD expression in Caco-2 cell lysate.