

GAA Antibody
Rabbit mAb
Catalog # AP92550

Specification

GAA Antibody - Product Information

Application	WB
Primary Accession	P10253
Reactivity	Rat
Clonality	Monoclonal
Other Names	
Acid maltase; GAA; Glucosidase alpha acid; LYAG;	
Isotype	Rabbit IgG
Host	Rabbit
Calculated MW	105324 Da

GAA Antibody - Additional Information

Purification	Affinity-chromatography
Immunogen	A synthesized peptide derived from human GAA
Description	Essential for the degradation of glycogen to glucose in lysosomes.
Storage Condition and Buffer	Rabbit IgG in phosphate buffered saline , pH 7.4, 150mM NaCl, 0.02% sodium azide and 50% glycerol. Store at +4°C short term. Store at -20°C long term. Avoid freeze / thaw cycle.

GAA Antibody - Protein Information

Name GAA

Function

Essential for the degradation of glycogen in lysosomes (PubMed:[14695532](http://www.uniprot.org/citations/14695532), PubMed:[18429042](http://www.uniprot.org/citations/18429042), PubMed:[1856189](http://www.uniprot.org/citations/1856189), PubMed:[7717400](http://www.uniprot.org/citations/7717400)). Has highest activity on alpha-1,4-linked glycosidic linkages, but can also hydrolyze alpha-1,6-linked glucans (PubMed:[29061980](http://www.uniprot.org/citations/29061980)).

Cellular Location

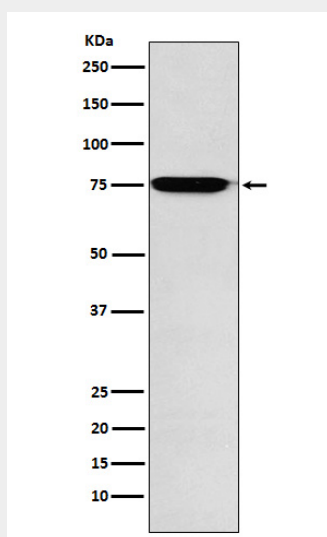
Lysosome. Lysosome membrane

GAA Antibody - Protocols

Provided below are standard protocols that you may find useful for product applications.

- [Western Blot](#)
- [Blocking Peptides](#)
- [Dot Blot](#)
- [Immunohistochemistry](#)
- [Immunofluorescence](#)
- [Immunoprecipitation](#)
- [Flow Cytometry](#)
- [Cell Culture](#)

GAA Antibody - Images



Western blot analysis of GAA expression in Human fetal liver lysate.