

**KLC1 Antibody**  
**Rabbit mAb**  
**Catalog # AP92545****Specification****KLC1 Antibody - Product Information**

Application	WB, IHC, FC, ICC, IP
Primary Accession	<a href="#">Q07866</a>
Reactivity	Rat
Clonality	Monoclonal
<b>Other Names</b>	
Kinesin2; KLC; Klc1; KNS2; KNS2A;	
Isotype	Rabbit IgG
Host	Rabbit
Calculated MW	65310 Da

**KLC1 Antibody - Additional Information**

Purification	Affinity-chromatography
Immunogen	A synthesized peptide derived from human KLC1
Description	Kinesin is a microtubule-associated force-producing protein that may play a role in organelle transport. The light chain may function in coupling of cargo to the heavy chain or in the modulation of its ATPase activity.
Storage Condition and Buffer	Rabbit IgG in phosphate buffered saline , pH 7.4, 150mM NaCl, 0.02% sodium azide and 50% glycerol. Store at +4°C short term. Store at -20°C long term. Avoid freeze / thaw cycle.

**KLC1 Antibody - Protein Information****Name** KLC1**Synonyms** KLC, KNS2**Function**

Kinesin is a microtubule-associated force-producing protein that may play a role in organelle transport (PubMed: [21385839](http://www.uniprot.org/citations/21385839)). The light chain may function in coupling of cargo to the heavy chain or in the modulation of its ATPase activity (By similarity).

**Cellular Location**

Cell projection, growth cone {ECO:0000250|UniProtKB:P37285}. Cytoplasmic vesicle. Cytoplasm, cytoskeleton

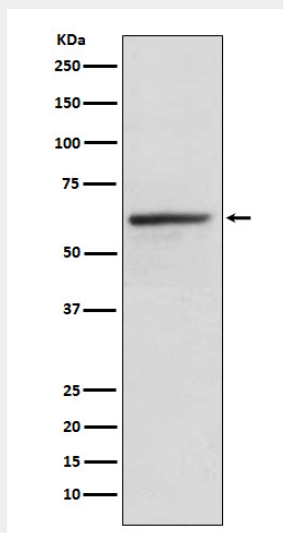
**Tissue Location**

Found in a variety of tissues. Mostly abundant in brain and spine.

**KLC1 Antibody - Protocols**

Provided below are standard protocols that you may find useful for product applications.

- [Western Blot](#)
- [Blocking Peptides](#)
- [Dot Blot](#)
- [Immunohistochemistry](#)
- [Immunofluorescence](#)
- [Immunoprecipitation](#)
- [Flow Cytometry](#)
- [Cell Culture](#)

**KLC1 Antibody - Images**

Western blot analysis of KLC1 expression in HeLa cell lysate.