

GOT2 Antibody
Rabbit mAb
Catalog # AP92544

Specification

GOT2 Antibody - Product Information

Application	WB, IHC, IP
Primary Accession	P00505
Reactivity	Rat
Clonality	Monoclonal
Other Names	
KAT4; KATIV; mitAAT;	
Isotype	Rabbit IgG
Host	Rabbit
Calculated MW	47518 Da

GOT2 Antibody - Additional Information

Purification	Affinity-chromatography
Immunogen	A synthesized peptide derived from human GOT2
Description	Plays a key role in amino acid metabolism. Important for metabolite exchange between mitochondria and cytosol. Facilitates cellular uptake of long-chain free fatty acids.
Storage Condition and Buffer	Rabbit IgG in phosphate buffered saline , pH 7.4, 150mM NaCl, 0.02% sodium azide and 50% glycerol. Store at +4°C short term. Store at -20°C long term. Avoid freeze / thaw cycle.

GOT2 Antibody - Protein Information

Name GOT2 ([HGNC:4433](#))

Function

Catalyzes the irreversible transamination of the L-tryptophan metabolite L-kynurenine to form kynurenic acid (KA). As a member of the malate-aspartate shuttle, it has a key role in the intracellular NAD(H) redox balance. Is important for metabolite exchange between mitochondria and cytosol, and for amino acid metabolism. Facilitates cellular uptake of long-chain free fatty acids.

Cellular Location

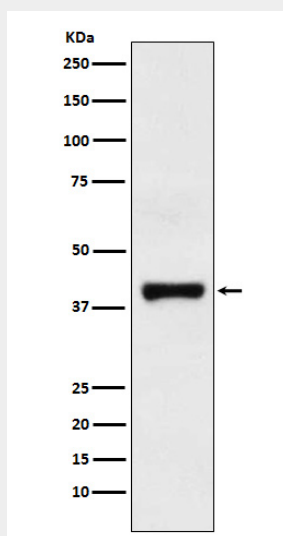
Mitochondrion matrix. Cell membrane. Note=Exposure to alcohol promotes translocation to the cell membrane.

GOT2 Antibody - Protocols

Provided below are standard protocols that you may find useful for product applications.

- [Western Blot](#)
- [Blocking Peptides](#)
- [Dot Blot](#)
- [Immunohistochemistry](#)
- [Immunofluorescence](#)
- [Immunoprecipitation](#)
- [Flow Cytometry](#)
- [Cell Culture](#)

GOT2 Antibody - Images



Western blot analysis of GOT2 expression in HepG2 cell lysate.