

GUSB Antibody
Rabbit mAb
Catalog # AP92539

Specification

GUSB Antibody - Product Information

Application	WB, IHC, FC, ICC
Primary Accession	P08236
Clonality	Monoclonal
Other Names	
Beta-glucuronidase; Beta-G1; GUSB;	
Isotype	Rabbit IgG
Host	Rabbit
Calculated MW	74732 Da

GUSB Antibody - Additional Information

Purification	Affinity-chromatography
Immunogen	A synthesized peptide derived from human GUSB
Description	Plays an important role in the degradation of dermatan and keratan sulfates.
Storage Condition and Buffer	Rabbit IgG in phosphate buffered saline , pH 7.4, 150mM NaCl, 0.02% sodium azide and 50% glycerol. Store at +4°C short term. Store at -20°C long term. Avoid freeze / thaw cycle.

GUSB Antibody - Protein Information

Name GUSB

Function

Plays an important role in the degradation of dermatan and keratan sulfates.

Cellular Location

Lysosome.

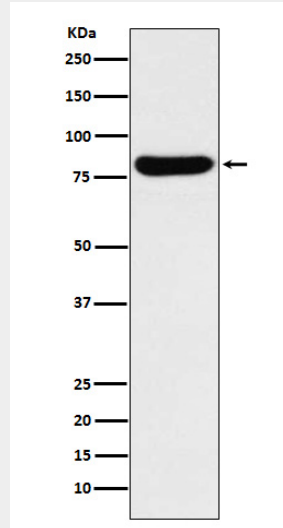
GUSB Antibody - Protocols

Provided below are standard protocols that you may find useful for product applications.

- [Western Blot](#)
- [Blocking Peptides](#)
- [Dot Blot](#)
- [Immunohistochemistry](#)

- [Immunofluorescence](#)
- [Immunoprecipitation](#)
- [Flow Cytometry](#)
- [Cell Culture](#)

GUSB Antibody - Images



Western blot analysis of GUSB expression in K562 cell lysate.